

For Research Use Only

# ARFGEF2 Recombinant antibody

Catalog Number: 84296-4-RR



## Basic Information

<b>Catalog Number:</b> 84296-4-RR	<b>GenBank Accession Number:</b> BC050449	<b>Purification Method:</b> Protein A purification
<b>Size:</b> 100ul , Concentration: 900 µg/ml by Nanodrop;	<b>GeneID (NCBI):</b> 10564	<b>CloneNo.:</b> 241538H5
<b>Source:</b> Rabbit	<b>UNIPROT ID:</b> Q9Y6D5	<b>Recommended Dilutions:</b> WB 1:5000-1:50000 IHC 1:200-1:800
<b>Isotype:</b> IgG	<b>Full Name:</b> ADP-ribosylation factor guanine nucleotide-exchange factor 2 (brefeldin A-inhibited)	
<b>Immunogen Catalog Number:</b> AG35396	<b>Observed MW:</b> 202 kDa	

## Applications

<b>Tested Applications:</b> WB, IHC, ELISA	<b>Positive Controls:</b>
<b>Species Specificity:</b> human	<b>WB :</b> HepG2 cells, HeLa cells, HEK-293T cells
<b>Note-IHC:</b> suggested antigen retrieval with <b>TE buffer pH 9.0; (*) Alternatively, antigen retrieval may be performed with citrate buffer pH 6.0</b>	<b>IHC :</b> human stomach cancer tissue,

## Background Information

ADP-ribosylation factors (ARFs) play an important role in intracellular vesicular trafficking. ARFGEF2 is involved in the activation of ARFs by accelerating replacement of bound GDP with GTP and is involved in Golgi transport. ARFGEF2 contains a Sec7 domain, which may be responsible for its guanine-nucleotide exchange activity and also brefeldin A inhibition.

## Storage

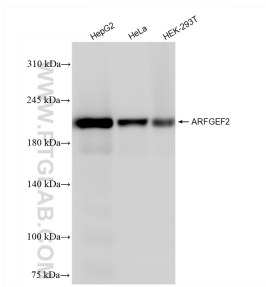
**Storage:**  
Store at -20°C. Stable for one year after shipment.  
**Storage Buffer:**  
PBS with 0.02% sodium azide and 50% glycerol pH 7.3.  
**Aliquoting is unnecessary for -20°C storage**

\*\*\* 20ul sizes contain 0.1% BSA

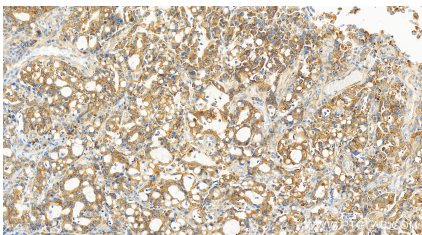
For technical support and original validation data for this product please contact:  
T: 1 (888) 4PTGLAB (1-888-478-4522) (toll free in USA), or 1(312) 455-8498 (outside USA)  
E: [proteintech@ptglab.com](mailto:proteintech@ptglab.com)  
W: [ptglab.com](http://ptglab.com)

This product is exclusively available under Proteintech Group brand and is not available to purchase from any other manufacturer.

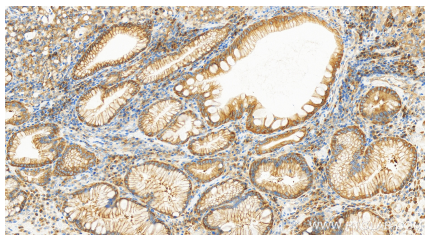
Selected Validation Data



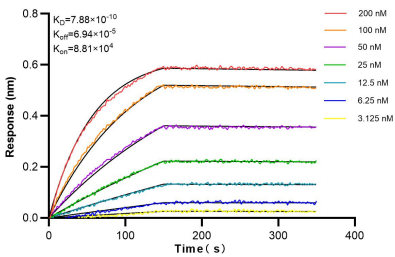
Various lysates were subjected to SDS PAGE followed by western blot with 84296-4-RR (ARFGEF2 antibody) at dilution of 1:10000 incubated at room temperature for 1.5 hours.



Immunohistochemical analysis of paraffin-embedded human stomach cancer tissue slide using 84296-4-RR (ARFGEF2 antibody) at dilution of 1:400 (under 40x lens). Heat mediated antigen retrieval with Tris-EDTA buffer (pH 9.0).



Immunohistochemical analysis of paraffin-embedded human stomach cancer tissue slide using 84296-4-RR (ARFGEF2 antibody) at dilution of 1:400 (under 40x lens). Heat mediated antigen retrieval with Tris-EDTA buffer (pH 9.0).



Biolayer interferometry (BLI) kinetic assays of 84296-4-RR against Human ARFGEF2 were performed. The affinity constant is 0.788 nM.