

For Research Use Only

# Beta TrCP Recombinant antibody

Catalog Number: 84297-1-RR



## Basic Information

<b>Catalog Number:</b> 84297-1-RR	<b>GenBank Accession Number:</b> BC027994	<b>Purification Method:</b> Protein A purification
<b>Size:</b> 100ul , Concentration: 1000 µg/ml by Nanodrop;	<b>GeneID (NCBI):</b> 8945	<b>CloneNo.:</b> 241287B8
<b>Source:</b> Rabbit	<b>UNIPROT ID:</b> Q9Y297	<b>Recommended Dilutions:</b> IF/ICC 1:125-1:500
<b>Isotype:</b> IgG	<b>Full Name:</b> beta-transducin repeat containing	
<b>Immunogen Catalog Number:</b> AG28739	<b>Calculated MW:</b> 605 aa, 69 kDa	

## Applications

<b>Tested Applications:</b> IF/ICC, ELISA	<b>Positive Controls:</b> IF/ICC : MCF-7 cells,
<b>Species Specificity:</b> human	

## Storage

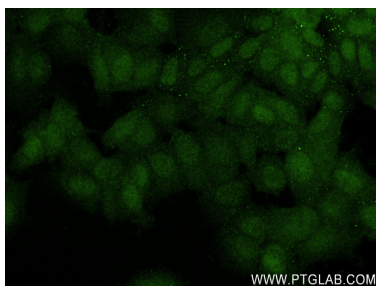
**Storage:**  
Store at -20°C. Stable for one year after shipment.  
**Storage Buffer:**  
PBS with 0.02% sodium azide and 50% glycerol  
Aliquoting is unnecessary for -20°C storage

\*\*\* 20ul sizes contain 0.1% BSA

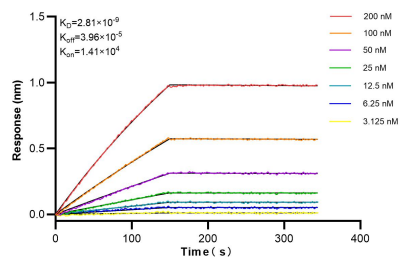
For technical support and original validation data for this product please contact:  
T: 1 (888) 4PTGLAB (1-888-478-4522) (toll free in USA), or 1(312) 455-8498 (outside USA)  
E: [proteintech@ptglab.com](mailto:proteintech@ptglab.com)  
W: [ptglab.com](http://ptglab.com)

This product is exclusively available under Proteintech Group brand and is not available to purchase from any other manufacturer.

## Selected Validation Data



Immunofluorescent analysis of (4% PFA) fixed MCF-7 cells using Beta TrCP antibody (84297-1-RR, Clone: 241287B8 ) at dilution of 1:250 and CoraLite®488-Conjugated AffiniPure Goat Anti-Rabbit IgG(H+L) (SA00013-2).



Biolayer interferometry (BLI) kinetic assays of 84297-1-RR against Human Beta TrCP were performed. The affinity constant is 2.81 nM.