

For Research Use Only

PTBP2 Recombinant antibody, PBS Only (Detector)

Catalog Number: 84300-3-PBS



Basic Information

Catalog Number:

84300-3-PBS

Size:

100ug, Concentration: 1 mg/ml by Nanodrop;

Source:

Rabbit

Isotype:

IgG

GenBank Accession Number:

NM_021190

GeneID (NCBI):

58155

UNIPROT ID:

Q9UKA9

Full Name:

polypyrimidine tract binding protein 2

Calculated MW:

57 kDa

Purification Method:

Protein A purification

CloneNo.:

241286E4

Applications

Tested Applications:

Sandwich ELISA, Indirect ELISA, Sample test

Species Specificity:

human

Product Information

84300-3-PBS targets PTBP2 as part of a matched antibody pair:

MP01460-1: 84300-2-PBS capture and 84300-3-PBS detection (validated in Sandwich ELISA)

Unconjugated rabbit recombinant monoclonal antibody in PBS only (BSA and azide free) storage buffer at a concentration of 1 mg/mL, ready for conjugation. Created using Proteintech's proprietary in-house recombinant technology. Recombinant production enables unrivalled batch-to-batch consistency, easy scale-up, and future security of supply.

This conjugation ready format makes antibodies ideal for use in many applications including: ELISAs, multiplex assays requiring matched pairs, mass cytometry, and multiplex imaging applications. Antibody use should be optimized by the end user for each application and assay.

Storage

Storage:

Store at -80°C.

Storage Buffer:

PBS Only

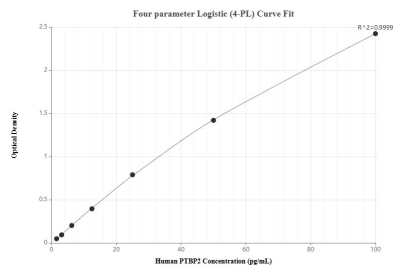
For technical support and original validation data for this product please contact:

T: 1 (888) 4PTGLAB (1-888-478-4522) (toll free in USA), or 1(312) 455-8498 (outside USA)

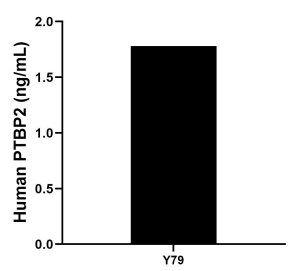
E: proteintech@ptglab.com
W: ptglab.com

This product is exclusively available under Proteintech Group brand and is not available to purchase from any other manufacturer.

Selected Validation Data



Sandwich ELISA standard curve of MP01460-1, Human PTBP2 Recombinant Matched Antibody Pair - PBS only. 84300-2-PBS was coated to a plate as the capture antibody and incubated with serial dilutions of standard SY01240. 84300-3-PBS was HRP conjugated as the detection antibody. Range: 1.56-100 pg/mL



The mean PTBP2 concentration was determined to be 1.78 ng/mL in Y79 cell extract based on a 1.3 mg/mL extract load.