

For Research Use Only

# CRLS1-Specific Recombinant antibody

Catalog Number: 84302-1-RR



## Basic Information

Catalog Number:

84302-1-RR

Size:

100ul, Concentration: 1000 µg/ml by

Nanodrop;

Source:

Rabbit

Isotype:

IgG

GenBank Accession Number:

NM\_019095

GeneID (NCBI):

54675

UNIPROT ID:

Q9UJA2

Full Name:

cardiolipin synthase 1

Calculated MW:

33 kDa

Observed MW:

32-35 kDa

Purification Method:

Protein A purification

CloneNo.:

241192G7

Recommended Dilutions:

WB 1:2000-1:10000

## Applications

Tested Applications:

WB, ELISA

Species Specificity:

human

Positive Controls:

WB : HEK-293 cells, A549 cells, Jurkat cells, HepG2 cells, HL-60 cells

## Storage

Storage:

Store at -20°C. Stable for one year after shipment.

Storage Buffer:

PBS with 0.02% sodium azide and 50% glycerol pH 7.3.

Aliquoting is unnecessary for -20°C storage

\*\*\* 20ul sizes contain 0.1% BSA

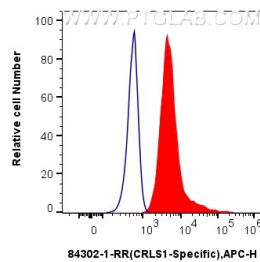
For technical support and original validation data for this product please contact:

T: 1 (888) 4PTGLAB (1-888-478-4522) (toll free in USA), or 1(312) 455-8498 (outside USA)

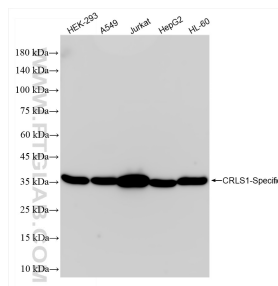
E: [proteintech@ptglab.com](mailto:proteintech@ptglab.com)  
W: [ptglab.com](http://ptglab.com)

This product is exclusively available under Proteintech Group brand and is not available to purchase from any other manufacturer.

## Selected Validation Data



1x10<sup>6</sup> HepG2 cells were intracellularly stained with 0.25 ug CRLS1-Specific Recombinant antibody (84302-1-RR, Clone:241192G7) and APC-Conjugated Goat Anti-Rabbit IgG(H+L)(red), or 0.25 ug Isotype Control (blue). Cells were fixed with 4% PFA and permeabilized with Flow Cytometry Perm Buffer (PF00011-C).



Various lysates were subjected to SDS PAGE followed by western blot with 84302-1-RR (CRLS1-Specific antibody) at dilution of 1:5000 incubated at room temperature for 1.5 hours.