

For Research Use Only

CRLS1-Specific Recombinant antibody

Catalog Number: 84302-2-RR



Basic Information

Catalog Number:

84302-2-RR

Size:

100ul , Concentration: 1000 µg/ml by

Nanodrop;

Source:

Rabbit

Isotype:

IgG

GenBank Accession Number:

NM_019095

GeneID (NCBI):

54675

UNIPROT ID:

Q9UJA2

Full Name:

cardiolipin synthase 1

Calculated MW:

33 kDa

Purification Method:

Protein A purification

CloneNo.:

241192D1

Recommended Dilutions:

IF/ICC 1:200-1:800

Applications

Tested Applications:

IF/ICC, FC (Intra), ELISA

Species Specificity:

human

Positive Controls:

IF/ICC : Hela cells,

Storage

Storage:

Store at -20°C. Stable for one year after shipment.

Storage Buffer:

PBS with 0.02% sodium azide and 50% glycerol pH 7.3.

Aliquoting is unnecessary for -20°C storage

*** 20ul sizes contain 0.1% BSA

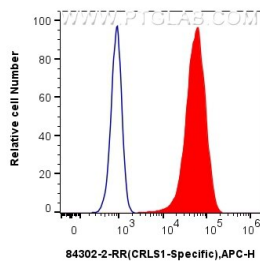
For technical support and original validation data for this product please contact:

T: 1 (888) 4PTGLAB (1-888-478-4522) (toll free
in USA), or 1(312) 455-8498 (outside USA)

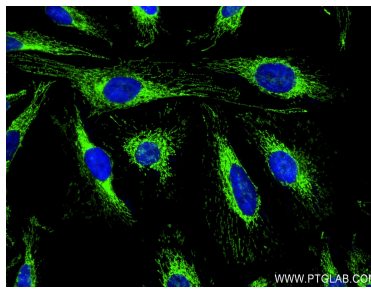
E: proteintech@ptglab.com
W: ptglab.com

This product is exclusively available under Proteintech Group brand and is not available to purchase from any other manufacturer.

Selected Validation Data



1×10^6 HeLa cells were intracellularly stained with 0.25 μ g CRLS1-Specific Recombinant antibody (84302-2-RR, Clone: 241192D1) and APC-Conjugated Goat Anti-Rabbit IgG(H+L)(red), or 0.25 μ g Isotype Control (blue). Cells were fixed with 4% PFA and permeabilized with Flow Cytometry Perm Buffer (PF00011-C).



Immunofluorescent analysis of (4% PFA) fixed HeLa cells using CRLS1-Specific antibody (84302-2-RR, Clone: 241192D1) at dilution of 1:400 and CoraLite®488-Conjugated AffiniPure Goat Anti-Rabbit IgG(H+L) (SA00013-2), CL594-Phalloidin (red).