

For Research Use Only

Mouse Atox1 Recombinant antibody, PBS Only (Capture)

Catalog Number: 84305-1-PBS



Basic Information

Catalog Number: 84305-1-PBS	GenBank Accession Number: NM_009720	Purification Method: Protein A purification
Size: 100ug , Concentration: 1 mg/ml by Nanodrop;	GeneID (NCBI): 11927	CloneNo.: 241566A7
Source: Rabbit	UNIPROT ID: O08997	
Isotype: IgG	Full Name: ATX1 (antioxidant protein 1) homolog 1 (yeast)	
Immunogen Catalog Number: AG35290	Calculated MW: 7 kDa	
	Observed MW: 7 kDa	

Applications

Tested Applications:
WB, IHC, Cytometric bead array, Indirect ELISA

Species Specificity:
human, mouse

Product Information

84305-1-PBS targets Atox1 as part of a matched antibody pair:

MP01193-1: 84305-1-PBS capture and 84305-2-PBS detection (validated in Cytometric bead array)

Unconjugated rabbit recombinant monoclonal antibody in PBS only (BSA and azide free) storage buffer at a concentration of 1 mg/mL, ready for conjugation. Created using Proteintech's proprietary in-house recombinant technology. Recombinant production enables unrivalled batch-to-batch consistency, easy scale-up, and future security of supply.

This conjugation ready format makes antibodies ideal for use in many applications including: ELISAs, multiplex assays requiring matched pairs, mass cytometry, and multiplex imaging applications. Antibody use should be optimized by the end user for each application and assay.

Background Information

Antioxidant 1 copper chaperone (Atox1) is a small cytosolic protein containing an MBS (metal binding site) and a potential NLS (nuclear localisation signal). It plays an essential role in copper homeostasis by facilitating the transfer of copper to the trans-Golgi. Atox1 has been implicated in a wide range of diseases, including many neurodegenerative, cancer and metabolic disorders.

Storage

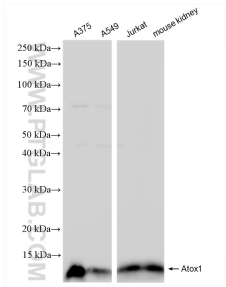
Storage:
Store at -80°C.

Storage Buffer:
PBS Only

For technical support and original validation data for this product please contact:
T: 1 (888) 4PTGLAB (1-888-478-4522) (toll free in USA), or 1(312) 455-8498 (outside USA)
E: proteintech@ptglab.com
W: ptglab.com

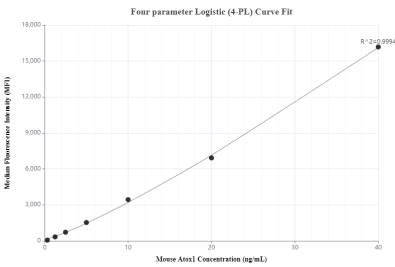
This product is exclusively available under Proteintech Group brand and is not available to purchase from any other manufacturer.

Selected Validation Data



Various lysates were subjected to SDS PAGE followed by western blot with 84305-1-RR (Atox1 antibody) at dilution of 1:10000 incubated at room temperature for 1.5 hours. This data was developed using the same antibody clone with 84305-1-PBS in a different storage buffer formulation.

Immunohistochemical analysis of paraffin-embedded mouse heart tissue slide using 84305-1-RR (Atox1 antibody) at dilution of 1:200 (under 40x lens). Heat mediated antigen retrieval with Tris-EDTA buffer (pH 9.0). This data was developed using the same antibody clone with 84305-1-PBS in a different storage buffer formulation.



Cytometric bead array standard curve of MP01193-1, MOUSE Atox1 Recombinant Matched Antibody Pair, PBS Only. Capture antibody: 84305-1-PBS. Detection antibody: 84305-2-PBS. Standard: Ag35290. Range: 0.313-40 ng/mL