

For Research Use Only

# CCT5 Recombinant antibody, PBS Only (Capture)

Catalog Number: 84310-2-PBS



## Basic Information

<b>Catalog Number:</b> 84310-2-PBS	<b>GenBank Accession Number:</b> BC035499	<b>Purification Method:</b> Protein A purification
<b>Size:</b> 100ug, Concentration: 1 mg/ml by Nanodrop;	<b>GeneID (NCBI):</b> 22948	<b>CloneNo.:</b> 241510B3
<b>Source:</b> Rabbit	<b>UNIPROT ID:</b> P48643	
<b>Isotype:</b> IgG	<b>Full Name:</b> chaperonin containing TCP1, subunit 5 (epsilon)	
<b>Immunogen Catalog Number:</b> AG2146	<b>Calculated MW:</b> 541 aa, 60 kDa	
	<b>Observed MW:</b> 60 kDa	

## Applications

**Tested Applications:**  
WB, IF/ICC, Cytometric bead array, Sandwich ELISA, Indirect ELISA, Sample test

**Species Specificity:**  
human

## Product Information

84310-2-PBS targets CCT5 as part of a matched antibody pair.

MP01209-1: 84310-2-PBS capture and 84310-1-PBS detection (validated in Cytometric bead array, Sandwich ELISA)

Unconjugated rabbit recombinant monoclonal antibody in PBS only (BSA and azide free) storage buffer at a concentration of 1 mg/mL, ready for conjugation. Created using Proteintech's proprietary in-house recombinant technology. Recombinant production enables unrivalled batch-to-batch consistency, easy scale-up, and future security of supply.

This conjugation ready format makes antibodies ideal for use in many applications including: ELISAs, multiplex assays requiring matched pairs, mass cytometry, and multiplex imaging applications. Antibody use should be optimized by the end user for each application and assay.

## Background Information

CCT5 is a subunit of chaperonin containing TCP1 complex that is also known as the TCP1 ring complex (TRiC). CCT5 involves enhancing Wnt/ $\beta$ -catenin signalling activity in GCs through abrogating the interaction between E-cadherin and  $\beta$ -catenin (PMID: 35194191). The expression levels of CCT5 have been found to be upregulated in types of cancers, including breast cancer, colon cancer, lung cancer, glioblastoma, hepatocellular carcinoma and ovarian cancer (PMID: 36768350). Human CCT5 consist of 541 amino acids organized in  $\beta$ -sheets and  $\alpha$ -helixes distributed into three domains and has a predicted molecular weight of 60 kDa.

## Storage

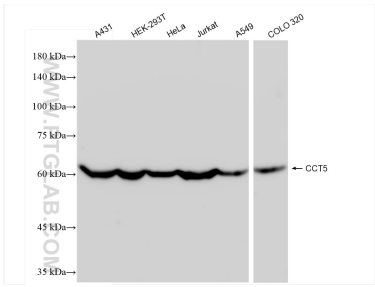
**Storage:**  
Store at -80°C.

**Storage Buffer:**  
PBS only, pH7.3

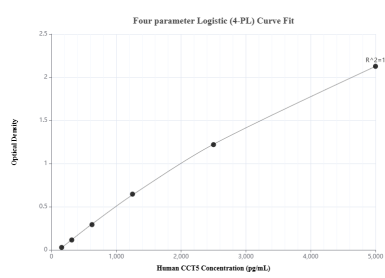
For technical support and original validation data for this product please contact:  
T: 1 (888) 4PTGLAB (1-888-478-4522) (toll free in USA), or 1(312) 455-8498 (outside USA)  
E: [proteintech@ptglab.com](mailto:proteintech@ptglab.com)  
W: [ptglab.com](http://ptglab.com)

This product is exclusively available under Proteintech Group brand and is not available to purchase from any other manufacturer.

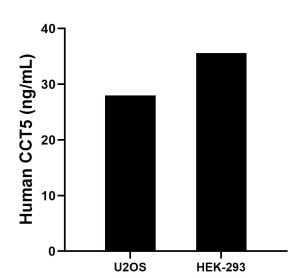
Selected Validation Data



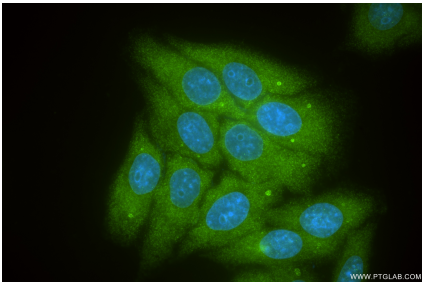
Various lysates were subjected to SDS PAGE followed by western blot with 84310-2-RR (CCT5 antibody) at dilution of 1:10000 incubated at room temperature for 1.5 hours. This data was developed using the same antibody clone with 84310-2-PBS in a different storage buffer formulation.



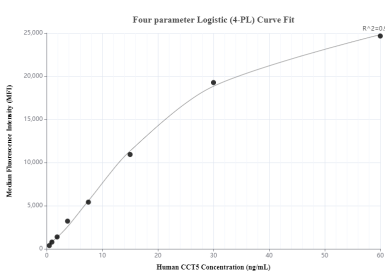
Sandwich ELISA standard curve of MP01209-1, Human CCT5 Recombinant Matched Antibody Pair - PBS only. 84310-2-PBS was coated to a plate as the capture antibody and incubated with serial dilutions of standard Ag2146. 84310-1-PBS was HRP conjugated as the detection antibody. Range: 156-5000 pg/mL



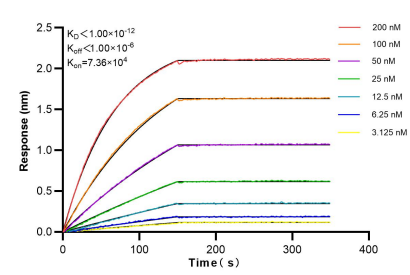
The mean CCT5 concentration was determined to be 28.01 ng/mL in U2OS cell extract based on a 3.1 mg/mL extract load and 35.60 ng/mL in HEK-293 cell extract based on a 2.0 mg/mL extract load.



Immunofluorescent analysis of (-20°C Methanol) fixed HepG2 cells using CCT5 antibody (84310-2-RR, Clone: 241510B3 ) at dilution of 1:400 and CoraLite®488-Conjugated Goat Anti-Rabbit IgG(H+L) (SA00013-2). This data was developed using the same antibody clone with 84310-2-PBS in a different storage buffer formulation.



Cytometric bead array standard curve of MP01209-1, CCT5 Recombinant Matched Antibody Pair, PBS Only. Capture antibody: 84310-2-PBS. Detection antibody: 84310-1-PBS. Standard: Ag2146. Range: 0.469-60 ng/mL



Biolayer interferometry (BLI) kinetic assays of 84310-2-RR against Human CCT5 were performed. The affinity constant is below 1 pM.