

For Research Use Only

CCT5 Recombinant antibody

Catalog Number: 84310-2-RR



Basic Information

Catalog Number: 84310-2-RR	GenBank Accession Number: BC035499	Purification Method: Protein A purification
Size: 100ul , Concentration: 1000 ug/ml by Nanodrop;	GeneID (NCBI): 22948	CloneNo.: 241510B3
Source: Rabbit	UNIPROT ID: P48643	Recommended Dilutions: WB 1:5000-1:50000 IF/ICC 1:200-1:800
Isotype: IgG	Full Name: chaperonin containing TCP1, subunit 5 (epsilon)	
Immunogen Catalog Number: AG2146	Calculated MW: 541 aa, 60 kDa	
	Observed MW: 60 kDa	

Applications

Tested Applications: WB, IF/ICC, ELISA	Positive Controls:
Species Specificity: human	WB : A431 cells, HEK-293T cells, HeLa cells, Jurkat cells, A549 cells, COLO 320 cells IF/ICC : HepG2 cells,

Background Information

CCT5 is a subunit of chaperonin containing TCP1 complex that is also known as the TCP1 ring complex (TRiC). CCT5 involves enhancing Wnt/ β -catenin signalling activity in GCs through abrogating the interaction between E-cadherin and β -catenin (PMID: 35194191). The expression levels of CCT5 have been found to be upregulated in types of cancers, including breast cancer, colon cancer, lung cancer, glioblastoma, hepatocellular carcinoma and ovarian cancer (PMID: 36768350). Human CCT5 consist of 541 amino acids organized in β -sheets and α -helixes distributed into three domains and has a predicted molecular weight of 60 kDa.

Storage

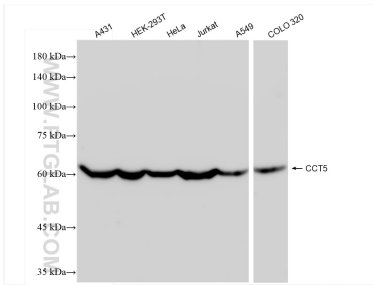
Storage:
Store at -20°C. Stable for one year after shipment.
Storage Buffer:
PBS with 0.02% sodium azide and 50% glycerol, pH7.3
Aliquoting is unnecessary for -20°C storage

*** 20ul sizes contain 0.1% BSA

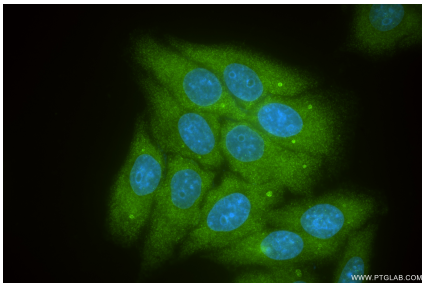
For technical support and original validation data for this product please contact:
T: 1 (888) 4PTGLAB (1-888-478-4522) (toll free in USA), or 1(312) 455-8498 (outside USA)
E: proteintech@ptglab.com
W: ptglab.com

This product is exclusively available under Proteintech Group brand and is not available to purchase from any other manufacturer.

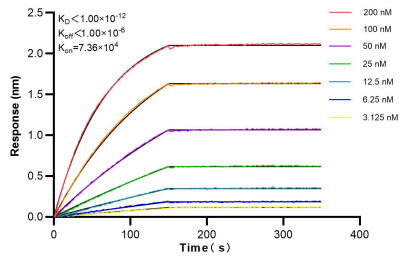
Selected Validation Data



Various lysates were subjected to SDS PAGE followed by western blot with 84310-2-RR (CCT5 antibody) at dilution of 1:10000 incubated at room temperature for 1.5 hours.



Immunofluorescent analysis of (-20°C Methanol) fixed HepG2 cells using CCT5 antibody (84310-2-RR, Clone: 241510B3) at dilution of 1:400 and CoraLite® 488-Conjugated Goat Anti-Rabbit IgG(H+L) (SA00013-2).



Biolayer interferometry (BLI) kinetic assays of 84310-2-RR against Human CCT5 were performed. The affinity constant is below 1 pM.