

For Research Use Only

MATN1 Recombinant antibody, PBS Only (Detector)

Catalog Number: 84313-1-PBS



Basic Information

Catalog Number: 84313-1-PBS	GenBank Accession Number: NM_002379	Purification Method: Protein A purification
Size: 100ug , Concentration: 1 mg/ml by Nanodrop;	GeneID (NCBI): 4146	CloneNo.: 241643D1
Source: Rabbit	UNIPROT ID: P21941	
Isotype: IgG	Full Name: matrilin 1, cartilage matrix protein	
Immunogen Catalog Number: AG29386	Calculated MW: 54 kDa	
	Observed MW: 54 kDa	

Applications

Tested Applications:
WB, Cytometric bead array, Indirect ELISA

Species Specificity:
human, mouse

Product Information

84313-1-PBS targets MATN1 as part of a matched antibody pair:

MP01215-1: 84313-2-PBS capture and 84313-1-PBS detection (validated in Cytometric bead array)

Unconjugated rabbit recombinant monoclonal antibody in PBS only (BSA and azide free) storage buffer at a concentration of 1 mg/mL, ready for conjugation. Created using Proteintech's proprietary in-house recombinant technology. Recombinant production enables unrivalled batch-to-batch consistency, easy scale-up, and future security of supply.

This conjugation ready format makes antibodies ideal for use in many applications including: ELISAs, multiplex assays requiring matched pairs, mass cytometry, and multiplex imaging applications. Antibody use should be optimized by the end user for each application and assay.

Background Information

MATN1 (matrilin 1), also known as CMP. It is expected to be located in extracellular space, the protein is mainly expressed in cartilage tissue and retina tissue. Also, the protein is a member of von Willebrand factor A domain containing protein family. This family of proteins are thought to be involved in the formation of filamentous networks in the extracellular matrices of various tissues. Mutations of this gene have been associated with variety of inherited chondrodysplasias. It is reported that COMP and matrilin-1 elute together in the gel filtration of cartilage extracts and can be co-immunoprecipitated with the presence of calcium (PMID: 15075323). The calculated molecular weight of MATN1 is 54 kDa.

Storage

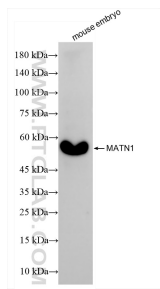
Storage:
Store at -80°C.

Storage Buffer:
PBS Only

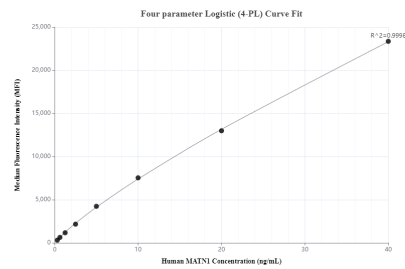
For technical support and original validation data for this product please contact:
T: 1 (888) 4PTGLAB (1-888-478-4522) (toll free in USA), or 1(312) 455-8498 (outside USA)
E: proteintech@ptglab.com
W: ptglab.com

This product is exclusively available under Proteintech Group brand and is not available to purchase from any other manufacturer.

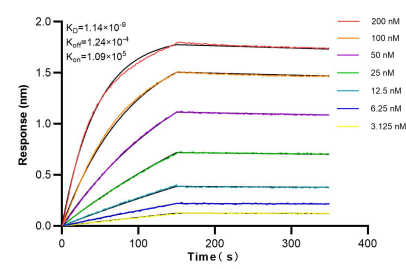
Selected Validation Data



mouse embryo tissue were subjected to SDS PAGE followed by western blot with 84313-1-RR (MATN1 antibody) at dilution of 1:2000 incubated at room temperature for 1.5 hours. This data was developed using the same antibody clone with 84313-1-PBS in a different storage buffer formulation.



Cytometric bead array standard curve of MP01215-1, MATN1 Recombinant Matched Antibody Pair, PBS Only. Capture antibody: 84313-2-PBS. Detection antibody: 84313-1-PBS. Standard: Ag29386. Range: 0.313-40 ng/mL.



Biolayer interferometry (BLI) kinetic assays of 84313-1-RR against Human MATN1 were performed. The affinity constant is 1.14 nM.