

For Research Use Only

MATN1 Recombinant antibody

Catalog Number: 84313-1-RR



Basic Information

Catalog Number:	84313-1-RR	GenBank Accession Number:	NM_002379	Purification Method:	Protein A purification
Size:	100ul , Concentration: 1000 ug/ml by Nanodrop;	GeneID (NCBI):	4146	CloneNo.:	241643D1
Source:	Rabbit	UNIPROT ID:	P21941	Recommended Dilutions:	WB 1:1000-1:4000
Isotype:	IgG	Full Name:	matrilin 1, cartilage matrix protein		
Immunogen Catalog Number:	AG29386	Calculated MW:	54 kDa		
		Observed MW:	54 kDa		

Applications

Tested Applications:	WB, ELISA	Positive Controls:	WB : mouse embryo tissue,
Species Specificity:	human, mouse		

Background Information

MATN1 (matrilin 1), also known as CMP. It is expected to be located in extracellular space, the protein is mainly expressed in cartilage tissue and retina tissue. Also, the protein is a member of von Willebrand factor A domain containing protein family. This family of proteins are thought to be involved in the formation of filamentous networks in the extracellular matrices of various tissues. Mutations of this gene have been associated with variety of inherited chondrodysplasias. It is reported that COMP and matrilin-1 elute together in the gel filtration of cartilage extracts and can be co-immunoprecipitated with the presence of calcium (PMID: 15075323). The calculated molecular weight of MATN1 is 54 kDa.

Storage

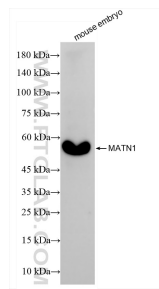
Storage:
Store at -20°C. Stable for one year after shipment.
Storage Buffer:
PBS with 0.02% sodium azide and 50% glycerol pH 7.3.
Aliquoting is unnecessary for -20°C storage

*** 20ul sizes contain 0.1% BSA

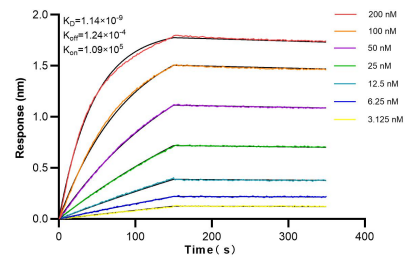
For technical support and original validation data for this product please contact:
T: 1 (888) 4PTGLAB (1-888-478-4522) (toll free in USA), or 1(312) 455-8498 (outside USA)
E: proteintech@ptglab.com
W: ptglab.com

This product is exclusively available under Proteintech Group brand and is not available to purchase from any other manufacturer.

Selected Validation Data



mouse embryo tissue were subjected to SDS PAGE followed by western blot with 84313-1-RR (MATN1 antibody) at dilution of 1:2000 incubated at room temperature for 1.5 hours.



Biolayer interferometry (BLI) kinetic assays of 84313-1-RR against Human MATN1 were performed. The affinity constant is 1.14 nM.