

For Research Use Only

# Mouse 4-1BB/TNFRSF9 Recombinant antibody, PBS Only (Detector)

Catalog Number: 84315-3-PBS



## Basic Information

<b>Catalog Number:</b> 84315-3-PBS	<b>GenBank Accession Number:</b> NM_001077509.1	<b>Purification Method:</b> Protein A purification
<b>Size:</b> 100ug, Concentration: 1 mg/ml by Nanodrop;	<b>GeneID (NCBI):</b> 21942	<b>CloneNo.:</b> 241647G11
<b>Source:</b> Rabbit	<b>UNIPROT ID:</b> P20334	
<b>Isotype:</b> IgG	<b>Full Name:</b> tumor necrosis factor receptor superfamily, member 9	
	<b>Calculated MW:</b> 28 kDa	

## Applications

**Tested Applications:**  
Cytometric bead array, Sandwich ELISA, Indirect ELISA, Sample test

**Species Specificity:**  
mouse

## Product Information

84315-3-PBS targets 4-1BB/TNFRSF9 as part of a matched antibody pair:

MP01216-1: 84315-2-PBS capture and 84315-3-PBS detection (validated in Cytometric bead array, Sandwich ELISA)

MP01216-2: 84315-1-PBS capture and 84315-3-PBS detection (validated in Cytometric bead array)

Unconjugated rabbit recombinant monoclonal antibody in PBS only (BSA and azide free) storage buffer at a concentration of 1 mg/mL, ready for conjugation. Created using Proteintech's proprietary in-house recombinant technology. Recombinant production enables unrivalled batch-to-batch consistency, easy scale-up, and future security of supply.

This conjugation ready format makes antibodies ideal for use in many applications including: ELISAs, multiplex assays requiring matched pairs, mass cytometry, and multiplex imaging applications. Antibody use should be optimized by the end user for each application and assay.

## Storage

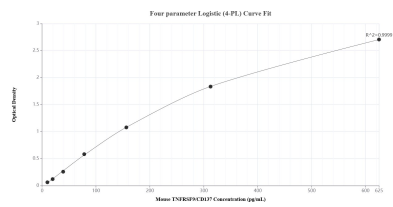
**Storage:**  
Store at -80°C.

**Storage Buffer:**  
PBS Only

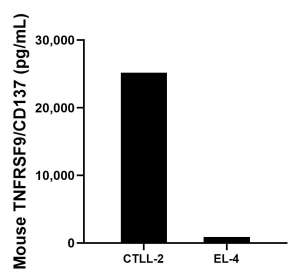
For technical support and original validation data for this product please contact:  
T: 1 (888) 4PTGLAB (1-888-478-4522) (toll free in USA), or 1(312) 455-8498 (outside USA)  
E: [proteintech@ptglab.com](mailto:proteintech@ptglab.com)  
W: [ptglab.com](http://ptglab.com)

This product is exclusively available under Proteintech Group brand and is not available to purchase from any other manufacturer.

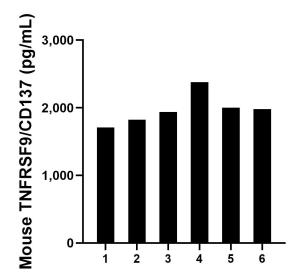
# Selected Validation Data



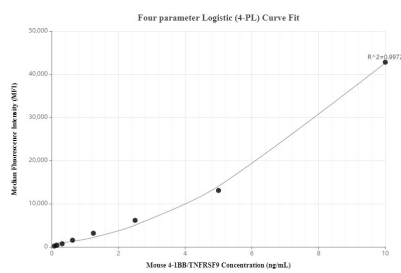
Sandwich ELISA standard curve of MP01216-1, Mouse TNFRSF9/CD137 Recombinant Matched Antibody Pair - PBS only. 84315-2-PBS was coated to a plate as the capture antibody and incubated with serial dilutions of standard Eg1627. 84315-3-PBS was HRP conjugated as the detection antibody. Range: 9.77-625 pg/mL.



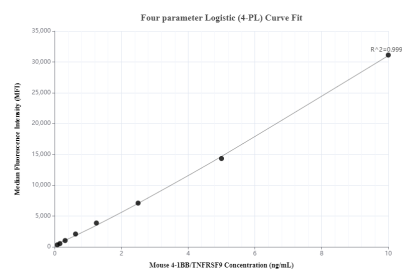
The mean TNFRSF9/CD137 concentration was determined to be 25182.7 pg/mL in CTLL-2 cell extract based on a 0.9 mg/mL extract load and 904.3 ng/mL in EL-4 cell extract based on a 5.2 mg/mL extract load.



Serum of six mouse was measured. The TNFRSF9/CD137 concentration of detected samples was determined to be 1971.4 pg/mL with a range of 1707.2 - 2381.3 pg/mL.



Cytometric bead array standard curve of MP01216-1, MOUSE 4-1BB/TNFRSF9 Recombinant Matched Antibody Pair, PBS Only. Capture antibody: 84315-2-PBS. Detection antibody: 84315-3-PBS. Standard: Eg1627. Range: 0.078-10 ng/mL



Cytometric bead array standard curve of MP01216-2, MOUSE 4-1BB/TNFRSF9 Recombinant Matched Antibody Pair, PBS Only. Capture antibody: 84315-1-PBS. Detection antibody: 84315-3-PBS. Standard: Eg1627. Range: 0.078-10 ng/mL