

For Research Use Only

SEL1L Recombinant antibody, PBS Only (Detector)

Catalog Number: 84317-2-PBS



Basic Information

Catalog Number: 84317-2-PBS	GenBank Accession Number: NM_005065	Purification Method: Protein A purification
Size: 100ug , Concentration: 1 mg/ml by Nanodrop;	GeneID (NCBI): 6400	CloneNo.: 241594C2
Source: Rabbit	UNIPROT ID: Q9UBV2	
Isotype: IgG	Full Name: sel-1 suppressor of lin-12-like (C. elegans)	
Immunogen Catalog Number: AG32178	Calculated MW: 89 kDa	

Applications

Tested Applications:
Cytometric bead array, Sandwich ELISA, Indirect ELISA, Sample test

Species Specificity:
human

Product Information

84317-2-PBS targets SEL1L as part of a matched antibody pair:

MP01186-1: 84317-5-PBS capture and 84317-2-PBS detection (validated in Cytometric bead array, Sandwich ELISA)

MP01186-3: 84317-4-PBS capture and 84317-2-PBS detection (validated in Cytometric bead array)

Unconjugated rabbit recombinant monoclonal antibody in PBS only (BSA and azide free) storage buffer at a concentration of 1 mg/mL, ready for conjugation. Created using Proteintech's proprietary in-house recombinant technology. Recombinant production enables unrivalled batch-to-batch consistency, easy scale-up, and future security of supply.

This conjugation ready format makes antibodies ideal for use in many applications including: ELISAs, multiplex assays requiring matched pairs, mass cytometry, and multiplex imaging applications. Antibody use should be optimized by the end user for each application and assay.

Storage

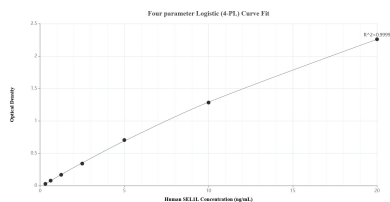
Storage:
Store at -80°C.

Storage Buffer:
PBS only, pH7.3

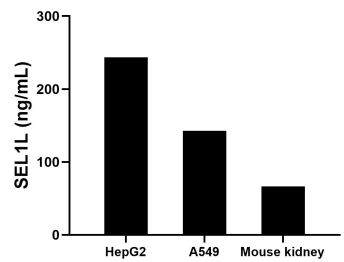
For technical support and original validation data for this product please contact:
T: 1 (888) 4PTGLAB (1-888-478-4522) (toll free in USA), or 1(312) 455-8498 (outside USA)
E: proteintech@ptglab.com
W: ptglab.com

This product is exclusively available under Proteintech Group brand and is not available to purchase from any other manufacturer.

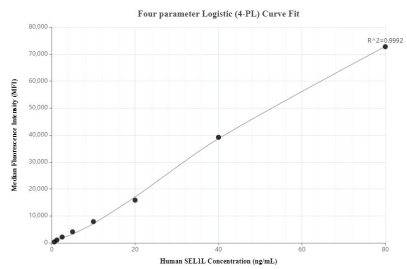
Selected Validation Data



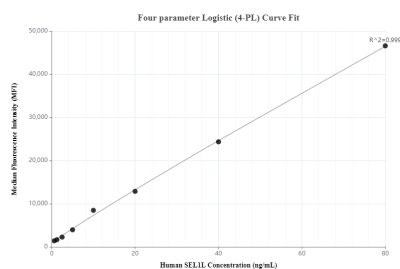
Sandwich ELISA standard curve of MP01186-1, Human SEL1L Recombinant Matched Antibody Pair - PBS only. 84317-5-PBS was coated to a plate as the capture antibody and incubated with serial dilutions of standard Ag32178. 84317-2-PBS was HRP conjugated as the detection antibody. Range: 0.313-20 ng/mL.



The mean SEL1L concentration was determined to be 243.66 ng/mL in HepG2 cell extract based on a 2.30 mg/mL extract load, 142.85 ng/mL in A549 cell extract based on a 2.70 mg/mL extract load and 66.47 ng/mL in mouse kidney tissue extract based on a 3.10 mg/mL extract load.



Cytometric bead array standard curve of MP01186-1, SEL1L Recombinant Matched Antibody Pair, PBS Only. Capture antibody: 84317-5-PBS. Detection antibody: 84317-2-PBS. Standard: Ag32178. Range: 0.625-80 ng/mL.



Cytometric bead array standard curve of MP01186-3, SEL1L Recombinant Matched Antibody Pair, PBS Only. Capture antibody: 84317-4-PBS. Detection antibody: 84317-2-PBS. Standard: Ag32178. Range: 0.625-80 ng/mL.