

For Research Use Only

# SEL1L Recombinant antibody

Catalog Number: 84317-7-RR



## Basic Information

<b>Catalog Number:</b> 84317-7-RR	<b>GenBank Accession Number:</b> NM_005065	<b>Purification Method:</b> Protein A purification
<b>Size:</b> 100ul , Concentration: 1000 µg/ml by Nanodrop;	<b>GeneID (NCBI):</b> 6400	<b>CloneNo.:</b> 241594G2
<b>Source:</b> Rabbit	<b>UNIPROT ID:</b> Q9UBV2	<b>Recommended Dilutions:</b> WB 1:2000-1:6000
<b>Isotype:</b> IgG	<b>Full Name:</b> sel-1 suppressor of lin-12-like (C. elegans)	
<b>Immunogen Catalog Number:</b> AG32178	<b>Calculated MW:</b> 89 kDa	
	<b>Observed MW:</b> 89 kDa	

## Applications

<b>Tested Applications:</b> WB, FC (Intra), ELISA	<b>Positive Controls:</b>
<b>Species Specificity:</b> human, mouse, rat	<b>WB :</b> NIH/3T3 cells, HepG2 cells, MCF-7 cells, BxPC-3 cells, U-87 MG cells, mouse kidney tissue, rat liver tissue

## Background Information

SEL1L (Suppressor Enhancer Lin-12 Like) is an endoplasmic reticulum-resident transmembrane protein that plays a critical role in collagen metabolism. It has been identified as an intracellular rheostat controlling collagen turnover, which is the balance between collagen synthesis and degradation. The protein's luminal face contains a Fibronectin-2 (FN2) domain, which is known to bind collagen. SEL1L functions as a sensor of collagen biosynthesis and is necessary for the upregulation of MRC2 (mannose receptor, C-type 2), a collagen endocytic receptor that mediates the clearance of collagen. .

## Storage

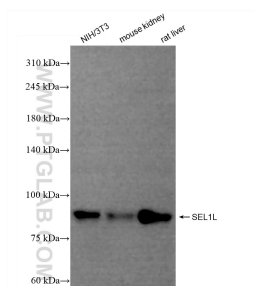
**Storage:**  
Store at -20°C. Stable for one year after shipment.  
**Storage Buffer:**  
PBS with 0.02% sodium azide and 50% glycerol  
**Aliquoting is unnecessary for -20°C storage**

\*\*\* 20ul sizes contain 0.1% BSA

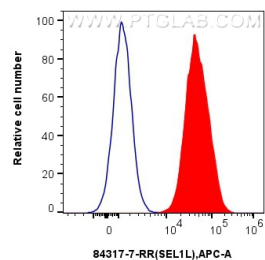
For technical support and original validation data for this product please contact:  
T: 1 (888) 4PTGLAB (1-888-478-4522) (toll free in USA), or 1(312) 455-8498 (outside USA)  
E: [proteintech@ptglab.com](mailto:proteintech@ptglab.com)  
W: [ptglab.com](http://ptglab.com)

This product is exclusively available under Proteintech Group brand and is not available to purchase from any other manufacturer.

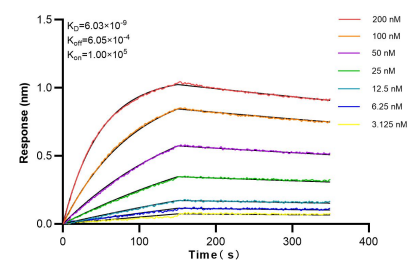
## Selected Validation Data



Mouse kidney tissue, rat liver tissue were subjected to SDS PAGE followed by western blot with 84317-7-RR (SEL1L antibody) at dilution of 1:5000 incubated at room temperature for 1.5 hours.



1x10<sup>6</sup> MCF-7 cells were intracellularly stained with 0.25 ug SEL1L Recombinant antibody (84317-7-RR, Clone:241594G2) and APC-Conjugated Goat Anti-Rabbit IgG(H+L)(red), or 0.25 ug Isotype Control (blue). Cells were fixed with 4% PFA and permeabilized with Flow Cytometry Perm Buffer (PF00011-C).



Biolayer interferometry (BLI) kinetic assays of 84317-7-RR against Human SEL1L were performed. The affinity constant is 6.03 nM.