

For Research Use Only

ATPBD3 Recombinant antibody

Catalog Number: 84318-4-RR



Basic Information

Catalog Number: 84318-4-RR	GenBank Accession Number: NM_145232	Purification Method: Protein A purification
Size: 100ul , Concentration: 1000 µg/ml by Nanodrop;	GeneID (NCBI): 90353	CloneNo.: 241630C4
Source: Rabbit	UNIPROT ID: Q7Z7A3	Recommended Dilutions: WB 1:2000-1:10000 IHC 1:50-1:500 IF-P 1:200-1:800
Isotype: IgG	Full Name: ATP binding domain 3	
Immunogen Catalog Number: AG35037	Calculated MW: 36 kDa	
	Observed MW: 35 kDa	

Applications

Tested Applications:

WB, IHC, IF-P, ELISA

Species Specificity:

human

Note-IHC: suggested antigen retrieval with TE buffer pH 9.0; (*) Alternatively, antigen retrieval may be performed with citrate buffer pH 6.0

Positive Controls:

WB : PC-3 cells, K-562 cells, HeLa cells, HEK-293 cells

IHC : mouse kidney tissue,

IF-P : mouse kidney tissue,

Background Information

ATPBD3, also known as CTU1, NCS6, is a subunit of a highly conserved protein complex involved in the thiolation of wobble U34(PMID: 18391219). ATPBD3 directly binds tRNAs and probably acts by catalyzing the adenylation of tRNAs, an intermediate required for 2-thiolation.

Storage

Storage:

Store at -20°C. Stable for one year after shipment.

Storage Buffer:

PBS with 0.02% sodium azide and 50% glycerol pH 7.3.

Aliquoting is unnecessary for -20°C storage

*** 20ul sizes contain 0.1% BSA

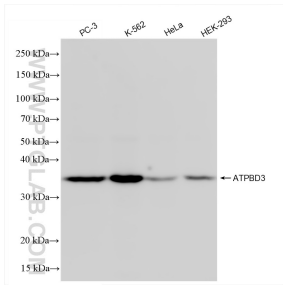
For technical support and original validation data for this product please contact:

T: 1 (888) 4PTGLAB (1-888-478-4522) (toll free in USA), or 1(312) 455-8498 (outside USA)

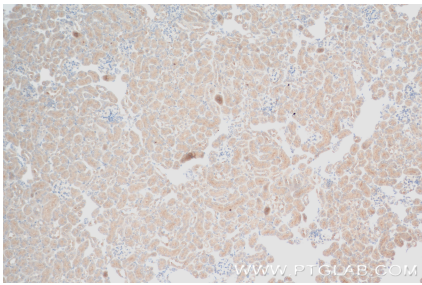
E: proteintech@ptglab.com
W: ptglab.com

This product is exclusively available under Proteintech Group brand and is not available to purchase from any other manufacturer.

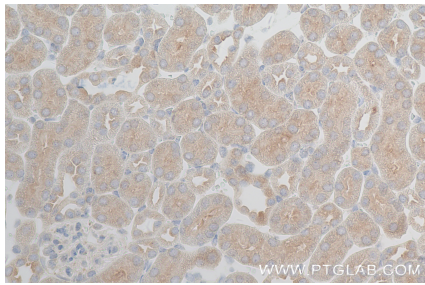
Selected Validation Data



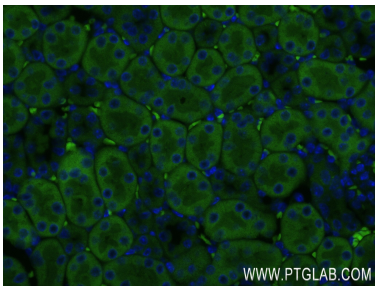
Various lysates were subjected to SDS PAGE followed by western blot with 84318-4-RR (ATPBD3 antibody) at dilution of 1:5000 incubated at room temperature for 1.5 hours.



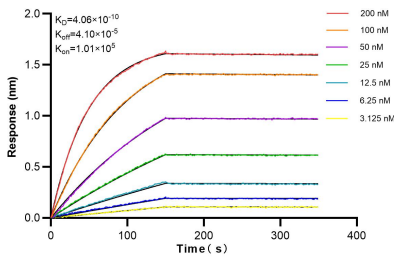
Immunohistochemical analysis of paraffin-embedded mouse kidney tissue slide using 84318-4-RR (ATPBD3 antibody) at dilution of 1:200 (under 10x lens). Heat mediated antigen retrieval with Tris-EDTA buffer (pH 9.0).



Immunohistochemical analysis of paraffin-embedded mouse kidney tissue slide using 84318-4-RR (ATPBD3 antibody) at dilution of 1:200 (under 40x lens). Heat mediated antigen retrieval with Tris-EDTA buffer (pH 9.0).



Immunofluorescent analysis of (4% PFA) fixed paraffin-embedded mouse kidney tissue using ATPBD3 antibody (84318-4-RR, Clone: 241630C4) at dilution of 1:400 and CoraLite®488-Conjugated Goat Anti-Rabbit IgG(H+L) (SA00013-2). Heat mediated antigen retrieval with Tris-EDTA buffer (pH 9.0).



Biolayer interferometry (BLI) kinetic assays of 84318-4-RR against Human ATPBD3 were performed. The affinity constant is 0.406 nM.