

For Research Use Only

THOP1 Recombinant antibody, PBS Only (Detector)

Catalog Number: 84319-3-PBS



Basic Information

Catalog Number: 84319-3-PBS	GenBank Accession Number: BC000135	Purification Method: Protein A purification
Size: 100ug , Concentration: 1 mg/ml by Nanodrop;	GeneID (NCBI): 7064	CloneNo.: 241607G8
Source: Rabbit	UNIPROT ID: P52888	
Isotype: IgG	Full Name: thimet oligopeptidase 1	
Immunogen Catalog Number: AG2268	Calculated MW: 689 aa, 79 kDa	
	Observed MW: 75 kDa	

Applications

Tested Applications:
WB, Cytometric bead array, Sandwich ELISA, Indirect ELISA, Sample test

Species Specificity:
human

Product Information

84319-3-PBS targets THOP1 as part of a matched antibody pair.

MP01191-1: 84319-4-PBS capture and 84319-3-PBS detection (validated in Cytometric bead array)

MP01191-3: 84319-2-PBS capture and 84319-3-PBS detection (validated in Cytometric bead array, Sandwich ELISA)

Unconjugated rabbit recombinant monoclonal antibody in PBS only (BSA and azide free) storage buffer at a concentration of 1 mg/mL, ready for conjugation. Created using Proteintech's proprietary in-house recombinant technology. Recombinant production enables unrivalled batch-to-batch consistency, easy scale-up, and future security of supply.

This conjugation ready format makes antibodies ideal for use in many applications including: ELISAs, multiplex assays requiring matched pairs, mass cytometry, and multiplex imaging applications. Antibody use should be optimized by the end user for each application and assay.

Background Information

Thimet oligopeptidase (THOP1) is a metallopeptidase implicated in the metabolism of many sleep-related peptides, including angiotensin I, gonadotropin releasing hormone (GnRH), neurotensin, and opioid peptides

Storage

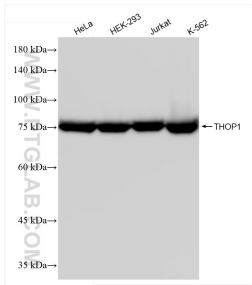
Storage:
Store at -80°C.

Storage Buffer:
PBS Only

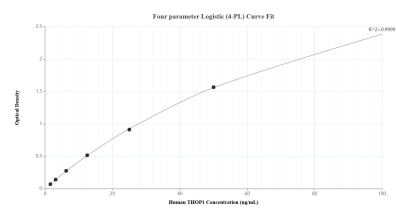
For technical support and original validation data for this product please contact:
T: 1 (888) 4PTGLAB (1-888-478-4522) (toll free in USA), or 1(312) 455-8498 (outside USA)
E: proteintech@ptglab.com
W: ptglab.com

This product is exclusively available under Proteintech Group brand and is not available to purchase from any other manufacturer.

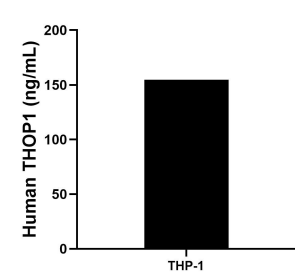
Selected Validation Data



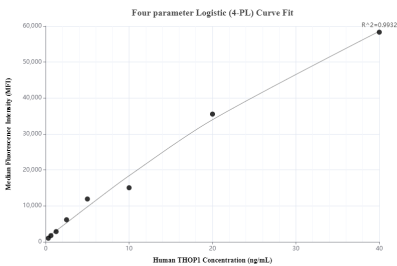
Various lysates were subjected to SDS PAGE followed by western blot with 84319-3-RR (THOP1 antibody) at dilution of 1:10000 incubated at room temperature for 1.5 hours. This data was developed using the same antibody clone with 84319-3-PBS in a different storage buffer formulation.



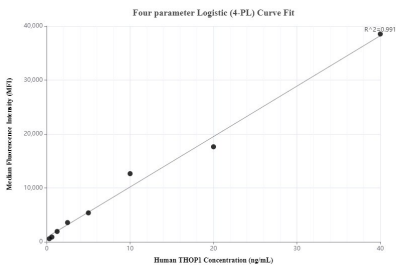
Sandwich ELISA standard curve of MP01191-3, Human THOP1 Recombinant Matched Antibody Pair - PBS only. 84319-2-PBS was coated to a plate as the capture antibody and incubated with serial dilutions of standard Ag2268. 84319-3-PBS was HRP conjugated as the detection antibody. Range: 1.56-100 ng/mL



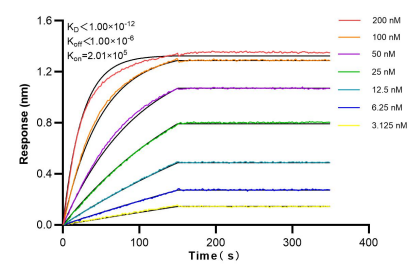
The mean THOP1 concentration was determined to be 154.80 ng/mL in THP-1 cell extract based on a 4.00 mg/mL extract load.



Cytometric bead array standard curve of MP01191-1, THOP1 Recombinant Matched Antibody Pair, PBS Only. Capture antibody: 84319-4-PBS. Detection antibody: 84319-3-PBS. Standard: Ag2268. Range: 0.313-40 ng/mL



Cytometric bead array standard curve of MP01191-3, THOP1 Recombinant Matched Antibody Pair, PBS Only. Capture antibody: 84319-2-PBS. Detection antibody: 84319-3-PBS. Standard: Ag2268. Range: 0.313-40 ng/mL



Biolayer interferometry (BLI) kinetic assays of 84319-3-RR against Human THOP1 were performed. The affinity constant is below 1 pM.