

For Research Use Only

# VIPAS39 Recombinant antibody, PBS Only (Capture)

Catalog Number: 84320-2-PBS



## Basic Information

<b>Catalog Number:</b> 84320-2-PBS	<b>GenBank Accession Number:</b> BC015054	<b>Purification Method:</b> Protein A purification
<b>Size:</b> 100ug , Concentration: 1 mg/ml by Nanodrop;	<b>GeneID (NCBI):</b> 63894	<b>CloneNo.:</b> 241616A12
<b>Source:</b> Rabbit	<b>UNIPROT ID:</b> Q9H9C1	
<b>Isotype:</b> IgG	<b>Full Name:</b> chromosome 14 open reading frame 133	
<b>Immunogen Catalog Number:</b> AG14762	<b>Calculated MW:</b> 493 aa, 57 kDa	
	<b>Observed MW:</b> 50 kDa	

## Applications

**Tested Applications:**  
WB, Cytometric bead array, Indirect ELISA

**Species Specificity:**  
human, mouse

## Product Information

84320-2-PBS targets VIPAS39 as part of a matched antibody pair:

MP01194-2: 84320-2-PBS capture and 84320-3-PBS detection (validated in Cytometric bead array)

MP01194-3: 84320-2-PBS capture and 84320-1-PBS detection (validated in Cytometric bead array)

Unconjugated rabbit recombinant monoclonal antibody in PBS only (BSA and azide free) storage buffer at a concentration of 1 mg/mL, ready for conjugation. Created using Proteintech's proprietary in-house recombinant technology. Recombinant production enables unrivalled batch-to-batch consistency, easy scale-up, and future security of supply.

This conjugation ready format makes antibodies ideal for use in many applications including: ELISAs, multiplex assays requiring matched pairs, mass cytometry, and multiplex imaging applications. Antibody use should be optimized by the end user for each application and assay.

## Background Information

VIPAS39 (also known as C14orf133 or SPE-39) is a binding protein to Vps33B, one of the subunits in the mammalian HOPS complex. VIPAS39 may be involved in endosomal maturation or fusion (PMID: 23918659). Mutations in Vps33B and VIPAS39 cause arthrogryposis-renal dysfunction-cholestasis (ARC) syndrome, which is a rare autosomal recessive multisystem disorder associated with abnormalities in polarized liver and kidney cells (PMID: 20190753).

## Storage

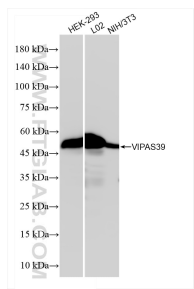
**Storage:**  
Store at -80°C.

**Storage Buffer:**  
PBS only, pH7.3

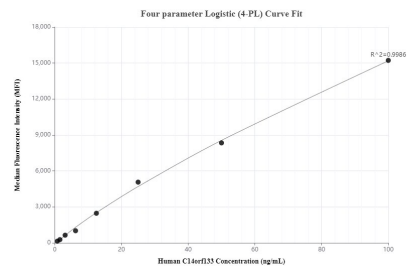
For technical support and original validation data for this product please contact:  
T: 1 (888) 4PTGLAB (1-888-478-4522) (toll free in USA), or 1(312) 455-8498 (outside USA)  
E: [proteintech@ptglab.com](mailto:proteintech@ptglab.com)  
W: [ptglab.com](http://ptglab.com)

This product is exclusively available under Proteintech Group brand and is not available to purchase from any other manufacturer.

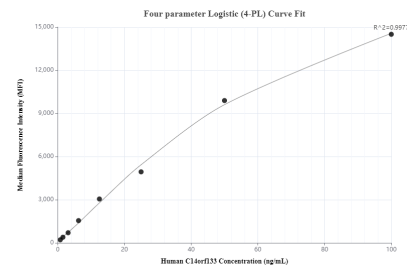
## Selected Validation Data



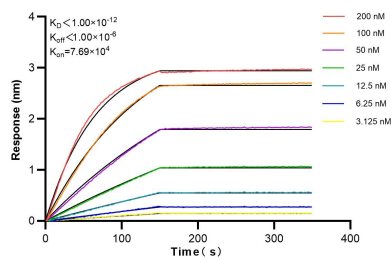
Various lysates were subjected to SDS PAGE followed by western blot with 84320-2-RR (C14orf133 antibody) at dilution of 1:20000 incubated at room temperature for 1.5 hours. This data was developed using the same antibody clone with 84320-2-PBS in a different storage buffer formulation.



Cytometric bead array standard curve of MP01194-2, VIPAS39 Recombinant Matched Antibody Pair, PBS Only. Capture antibody: 84320-2-PBS. Detection antibody: 84320-3-PBS. Standard: Ag14762. Range: 0.781-100 ng/mL.



Cytometric bead array standard curve of MP01194-3, VIPAS39 Recombinant Matched Antibody Pair, PBS Only. Capture antibody: 84320-2-PBS. Detection antibody: 84320-1-PBS. Standard: Ag14762. Range: 0.781-100 ng/mL.



Biolayer interferometry (BLI) kinetic assays of 84320-2-RR against Human VIPAS39 were performed. The affinity constant is below 1 pM.