

For Research Use Only

CLUH Recombinant antibody, PBS Only

Catalog Number: 84321-4-PBS



Basic Information

Catalog Number:

84321-4-PBS

Size:

100ug , Concentration: 1 mg/ml by Nanodrop;

Source:

Rabbit

Isotype:

IgG

Immunogen Catalog Number:

AG34275

GenBank Accession Number:

BC156940

GeneID (NCBI):

23277

UNIPROT ID:

O75153

Full Name:

KIAA0664

Purification Method:

Protein A purification

CloneNo.:

241640C11

Applications

Tested Applications:

IF/ICC, Indirect ELISA

Species Specificity:

human

Background Information

Clustered mitochondria homolog (CLUH) is a conserved RNA-binding protein, that binds transcripts encoding proteins involved in the respiratory chain, the tricarboxylic acid (TCA) cycle, and other mitochondrial metabolic pathways. Upon loss of CLUH, target mRNAs are subjected to faster decay, and their respective proteins are decreased in abundance. This leads to alterations in mitochondrial distribution (mitochondrial clustering as the gene name alludes to) mitochondrial cristae integrity, respiratory defects, loss of mtDNA, and decreased activity of TCA cycle enzymes. (PMID: 35559794)

Storage

Storage:

Store at -80°C.

Storage Buffer:

PBS Only

For technical support and original validation data for this product please contact:

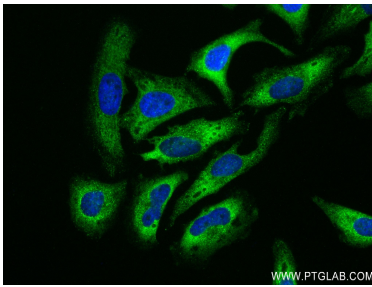
T: 1 (888) 4PTGLAB (1-888-478-4522) (toll free in USA), or 1(312) 455-8498 (outside USA)

E: proteintech@ptglab.com

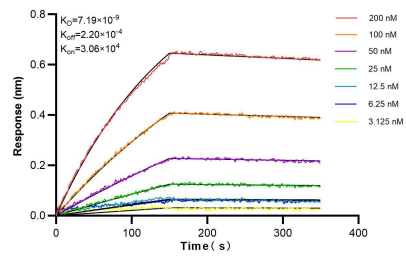
W: ptglab.com

This product is exclusively available under Proteintech Group brand and is not available to purchase from any other manufacturer.

Selected Validation Data



Immunofluorescent analysis of (4% PFA) fixed HeLa cells using CLUH antibody (84321-4-RR, Clone: 241640C.11) at dilution of 1:250 and CoraLite®488-Conjugated Goat Anti-Rabbit IgG(H+L) (SA00013-2). This data was developed using the same antibody clone with 84321-4-PBS in a different storage buffer formulation.



Biolayer interferometry (BLI) kinetic assays of 84321-4-RR against Human CLUH were performed. The affinity constant is 7.19 nM.