

For Research Use Only

CD45.1 Recombinant antibody

Catalog Number: 84325-2-RR



Basic Information

Catalog Number: 84325-2-RR	GenBank Accession Number: GeneID (NCBI): 19264	Purification Method: Protein A purification
Size: 100ul, Concentration: 1000 µg/ml by Nanodrop;	Full Name: protein tyrosine phosphatase, receptor type, C	CloneNo.: 240921A2
Source: Rabbit	Observed MW: 200 kDa	Recommended Dilutions: WB 1:2000-1:10000 IHC 1:2000-1:8000 IF-P 1:200-1:800 IF-Fro 1:200-1:800
Isotype: IgG		

Applications

Tested Applications: WB, IHC, IF-P, IF-Fro, ELISA	Positive Controls: WB : SJL mouse thymus tissue, SJL mouse spleen tissue
Species Specificity: mouse	IHC : mouse spleen tissue, IF-P : mouse spleen tissue, IF-Fro : mouse spleen tissue,
Note-IHC: suggested antigen retrieval with TE buffer pH 9.0; (*) Alternatively, antigen retrieval may be performed with citrate buffer pH 6.0	

Background Information

CD45, also known as protein tyrosine phosphatase, receptor type C, is a type I transmembrane protein expressed on the surface of all haematopoietic cells with the exception of erythrocytes and platelets (PMID: 3489673; 28615666). CD45 is a pan-haematopoietic cell marker and has been shown to be essential for T- and B-cell activation and signalling (PMID: 9429890; 16378097). Allelic variants of mouse CD45, CD45.1 (Ly5.1) and CD45.2 (Ly5.1), have been established as a marker system to track haematopoietic cells following congenic mouse bone marrow transplants (PMID: 28615666). CD45.2 is the common form and is expressed by most of the established strains, while CD45.1 is found in only a few like the SJL mouse strain (PMID: 3489673).

Storage

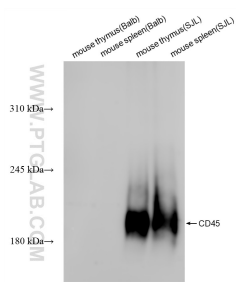
Storage:
Store at -20°C. Stable for one year after shipment.
Storage Buffer:
PBS with 0.02% sodium azide and 50% glycerol, pH7.3
Aliquoting is unnecessary for -20°C storage

*** 20ul sizes contain 0.1% BSA

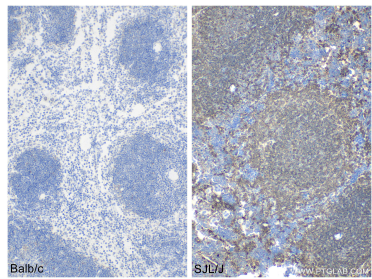
For technical support and original validation data for this product please contact:
T: 1 (888) 4PTGLAB (1-888-478-4522) (toll free in USA), or 1(312) 455-8498 (outside USA)
E: proteintech@ptglab.com
W: ptglab.com

This product is exclusively available under Proteintech Group brand and is not available to purchase from any other manufacturer.

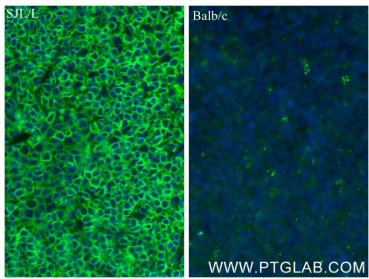
Selected Validation Data



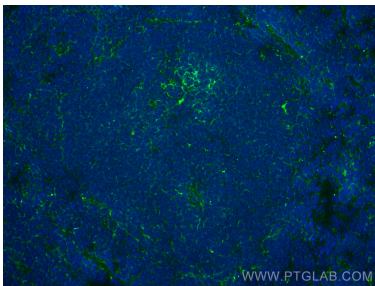
Various lysates were subjected to SDS PAGE followed by western blot with 84325-2-RR (Mouse CD45.1-ly5a-Domain 2 antibody) at dilution of 1:5000 incubated at room temperature for 1.5 hours.



Immunohistochemical analysis of paraffin-embedded mouse spleen tissue slide using 84325-2-RR (CD45.1 antibody) at dilution of 1:4000 (under 10x lens). Heat mediated antigen retrieval with Tris-EDTA buffer (pH 9.0).



Immunofluorescent analysis of (4% PFA) fixed paraffin-embedded mouse spleen tissue using CD45.1 antibody (84325-2-RR, Clone: 240921A2) at dilution of 1:400 and CoraLite®488-Conjugated Goat Anti-Rabbit IgG(H+L) (SA00013-2). Heat-mediated antigen retrieval with Tris-EDTA buffer (pH 9.0).



Immunofluorescent analysis of un-fixed frozen OCT-embedded mouse spleen tissue using CD45.1 antibody (84325-2-RR, Clone: 240921A2) at dilution of 1:400 and CoraLite®488-Conjugated Goat Anti-Rabbit IgG(H+L) (SA00013-2).