

For Research Use Only

CLEC14A Recombinant antibody

Catalog Number: 84327-1-RR



Basic Information

Catalog Number:

84327-1-RR

Size:

100ul , Concentration: 1000 µg/ml by
Nanodrop;

Source:

Rabbit

Isotype:

IgG

Immunogen Catalog Number:

AG21081

GenBank Accession Number:

BC031567

GeneID (NCBI):

161198

UNIPROT ID:

Q86T13

Full Name:

C-type lectin domain family 14,
member A

Calculated MW:

490 aa, 52 kDa

Observed MW:

52 kDa, 100 kDa

Purification Method:

Protein A purification

CloneNo.:

241206D3

Recommended Dilutions:

WB 1:2000-1:10000

Applications

Tested Applications:

WB, ELISA

Species Specificity:

human, mouse, rat

Positive Controls:

WB : HEK-293T cells, HUVEC cells, mouse brain tissue,
rat brain tissue

Background Information

CLEC14A is a single-pass type I transmembrane protein whose extracellular domain consists of a C-type lectin-like domain (CTLD), a series of EGF-like domains, and a sushi-like domain (PMID: 23644659). CLEC14A is a member of the C-type lectin domain superfamily that also includes endosialin, thrombomodulin and CD93 (PMID: 16336259). It has been reported that CLEC14A is specifically expressed in endothelial cells and mediates cell to cell adhesion (PMID: 21095181). CLEC14A may be involved in tumor angiogenesis (PMID: 21706054; 23644659).

Storage

Storage:

Store at -20°C. Stable for one year after shipment.

Storage Buffer:

PBS with 0.02% sodium azide and 50% glycerol pH 7.3.

Aliquoting is unnecessary for -20°C storage

*** 20ul sizes contain 0.1% BSA

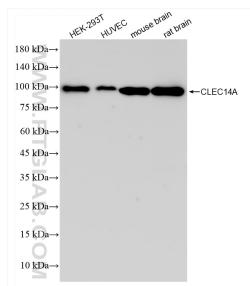
For technical support and original validation data for this product please contact:

T: 1 (888) 4PTGLAB (1-888-478-4522) (toll free
in USA), or 1(312) 455-8498 (outside USA)

E: proteintech@ptglab.com
W: ptglab.com

This product is exclusively available under Proteintech Group brand and is not available to purchase from any other manufacturer.

Selected Validation Data



Various lysates were subjected to SDS PAGE followed by western blot with 84327-1-RR (CLEC14A antibody) at dilution of 1:5000 incubated at room temperature for 1.5 hours.