

For Research Use Only

RAPGEF2 Recombinant antibody, PBS Only (Detector)

Catalog Number: 84331-2-PBS



Basic Information

Catalog Number: 84331-2-PBS	GenBank Accession Number: NM_014247.2	Purification Method: Protein A purification
Size: 100ug , Concentration: 1 mg/ml by Nanodrop;	GeneID (NCBI): 9693	CloneNo.: 241637C6
Source: Rabbit	UNIPROT ID: Q9Y4G8	
Isotype: IgG	Full Name: Rap guanine nucleotide exchange factor (GEF) 2	
Immunogen Catalog Number: AG35288	Calculated MW: 167kDa	

Applications

Tested Applications:
Cytometric bead array, Sandwich ELISA, Indirect ELISA, Sample test

Species Specificity:
human

Product Information

84331-2-PBS targets RAPGEF2 as part of a matched antibody pair:

MP01235-1: 84331-1-PBS capture and 84331-2-PBS detection (validated in Cytometric bead array)

MP01235-2: 84331-3-PBS capture and 84331-2-PBS detection (validated in Sandwich ELISA)

Unconjugated rabbit recombinant monoclonal antibody in PBS only (BSA and azide free) storage buffer at a concentration of 1 mg/mL, ready for conjugation. Created using Proteintech's proprietary in-house recombinant technology. Recombinant production enables unrivalled batch-to-batch consistency, easy scale-up, and future security of supply.

This conjugation ready format makes antibodies ideal for use in many applications including: ELISAs, multiplex assays requiring matched pairs, mass cytometry, and multiplex imaging applications. Antibody use should be optimized by the end user for each application and assay.

Storage

Storage:
Store at -80°C.

Storage Buffer:
PBS Only

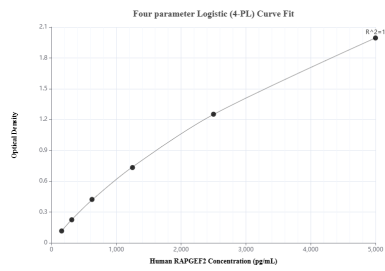
For technical support and original validation data for this product please contact:

T: 1 (888) 4PTGLAB (1-888-478-4522) (toll free in USA), or 1(312) 455-8498 (outside USA)

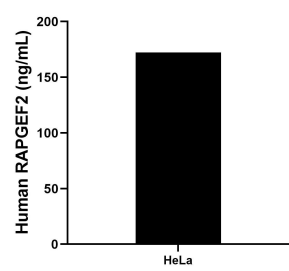
E: proteintech@ptglab.com
W: ptglab.com

This product is exclusively available under Proteintech Group brand and is not available to purchase from any other manufacturer.

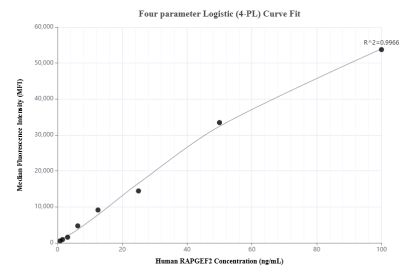
Selected Validation Data



Sandwich ELISA standard curve of MP01235-2, Human RAPGEF2 Recombinant Matched Antibody Pair - PBS only. 84331-3-PBS was coated to a plate as the capture antibody and incubated with serial dilutions of standard Ag35288. 84331-2-PBS was HRP conjugated as the detection antibody. Range: 156-5000 pg/mL



The mean RAPGEF2 concentration was determined to be 172.25 ng/mL in HeLa cell extract based on a 1.5 mg/mL extract load.



Cytometric bead array standard curve of MP01235-1, RAPGEF2 Recombinant Matched Antibody Pair, PBS Only. Capture antibody: 84331-1-PBS. Detection antibody: 84331-2-PBS. Standard: Ag35288. Range: 0.781-100 ng/mL