

For Research Use Only

# RAPGEF2 Recombinant antibody

Catalog Number: 84331-4-RR



## Basic Information

<b>Catalog Number:</b> 84331-4-RR	<b>GenBank Accession Number:</b> NM_014247.2	<b>Purification Method:</b> Protein A purification
<b>Size:</b> 100ul , Concentration: 1000 µg/ml by Nanodrop;	<b>GeneID (NCBI):</b> 9693	<b>CloneNo.:</b> 241637G5
<b>Source:</b> Rabbit	<b>UNIPROT ID:</b> Q9Y4G8	<b>Recommended Dilutions:</b> WB 1:5000-1:50000 IHC 1:50-1:500 IF/ICC 1:125-1:500
<b>Isotype:</b> IgG	<b>Full Name:</b> Rap guanine nucleotide exchange factor (GEF) 2	
<b>Immunogen Catalog Number:</b> AG35288	<b>Calculated MW:</b> 167kDa <b>Observed MW:</b> 200 kDa	

## Applications

<b>Tested Applications:</b> WB, IHC, IF/ICC, ELISA	<b>Positive Controls:</b>
<b>Species Specificity:</b> human, mouse	<b>WB :</b> HeLa cells, SH-SY5Y cells, Jurkat cells
<b>Note-IHC:</b> suggested antigen retrieval with <b>TE buffer pH 9.0; (*) Alternatively, antigen retrieval may be performed with citrate buffer pH 6.0</b>	<b>IHC :</b> mouse kidney tissue,
	<b>IF/ICC :</b> Jurkat cells,

## Storage

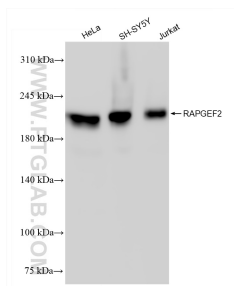
**Storage:**  
Store at -20°C. Stable for one year after shipment.  
**Storage Buffer:**  
PBS with 0.02% sodium azide and 50% glycerol pH 7.3.  
**Aliquoting is unnecessary for -20°C storage**

\*\*\* 20ul sizes contain 0.1% BSA

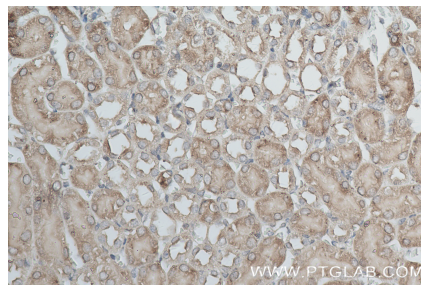
For technical support and original validation data for this product please contact:  
T: 1 (888) 4PTGLAB (1-888-478-4522) (toll free in USA), or 1(312) 455-8498 (outside USA)  
E: [proteintech@ptglab.com](mailto:proteintech@ptglab.com)  
W: [ptglab.com](http://ptglab.com)

This product is exclusively available under Proteintech Group brand and is not available to purchase from any other manufacturer.

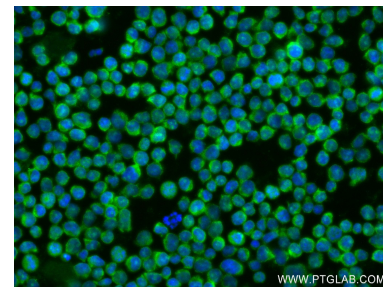
## Selected Validation Data



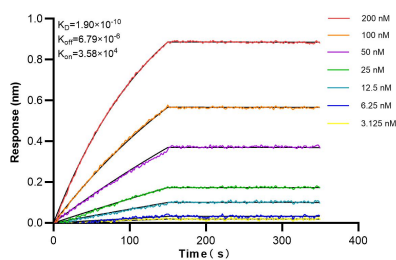
Various lysates were subjected to SDS PAGE followed by western blot with 84331-4-RR (RAPGEF2 antibody) at dilution of 1:10000 incubated at room temperature for 1.5 hours.



Immunohistochemical analysis of paraffin-embedded mouse kidney tissue slide using 84331-4-RR (RAPGEF2 antibody) at dilution of 1:200 (under 40x lens). Heat mediated antigen retrieval with Tris-EDTA buffer (pH 9.0).



Immunofluorescent analysis of (4% PFA) fixed Jurkat cells using RAPGEF2 antibody (84331-4-RR, Clone: 241637G5 ) at dilution of 1:250 and CoraLite®488-Conjugated Goat Anti-Rabbit IgG(H+L) (SA00013-2).



Biolayer interferometry (BLI) kinetic assays of 84331-4-RR against Human RAPGEF2 were performed. The affinity constant is 0.19 nM.