

For Research Use Only

# CD157 Recombinant antibody, PBS Only (Capture)

Catalog Number: 84333-1-PBS



## Basic Information

<b>Catalog Number:</b> 84333-1-PBS	<b>GenBank Accession Number:</b> BC012095	<b>Purification Method:</b> Protein A purification
<b>Size:</b> 100ug , Concentration: 1 mg/ml by Nanodrop;	<b>GeneID (NCBI):</b> 683	<b>CloneNo.:</b> 241424D7
<b>Source:</b> Rabbit	<b>UNIPROT ID:</b> Q10588	
<b>Isotype:</b> IgG	<b>Full Name:</b> bone marrow stromal cell antigen 1	
	<b>Calculated MW:</b> 318 aa, 36 kDa	

## Applications

**Tested Applications:**  
Cytometric bead array, Sandwich ELISA, Indirect ELISA, Sample test

**Species Specificity:**  
human

## Product Information

84333-1-PBS targets CD157 as part of a matched antibody pair:

MP01225-1: 84333-1-PBS capture and 84333-2-PBS detection (validated in Cytometric bead array)

MP01225-2: 84333-1-PBS capture and 84333-3-PBS detection (validated in Cytometric bead array)

MP01225-4: 84333-1-PBS capture and 84333-5-PBS detection (validated in Sandwich ELISA)

Unconjugated rabbit recombinant monoclonal antibody in PBS only (BSA and azide free) storage buffer at a concentration of 1 mg/mL, ready for conjugation. Created using Proteintech's proprietary in-house recombinant technology. Recombinant production enables unrivalled batch-to-batch consistency, easy scale-up, and future security of supply.

This conjugation ready format makes antibodies ideal for use in many applications including: ELISAs, multiplex assays requiring matched pairs, mass cytometry, and multiplex imaging applications. Antibody use should be optimized by the end user for each application and assay.

## Storage

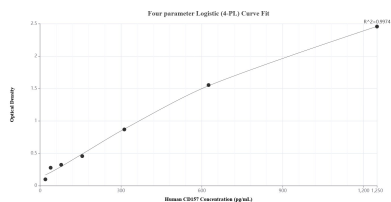
**Storage:**  
Store at -80°C.

**Storage Buffer:**  
PBS Only

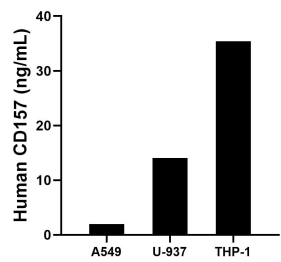
For technical support and original validation data for this product please contact:  
T: 1 (888) 4PTGLAB (1-888-478-4522) (toll free in USA), or 1(312) 455-8498 (outside USA)  
E: [proteintech@ptglab.com](mailto:proteintech@ptglab.com)  
W: [ptglab.com](http://ptglab.com)

This product is exclusively available under Proteintech Group brand and is not available to purchase from any other manufacturer.

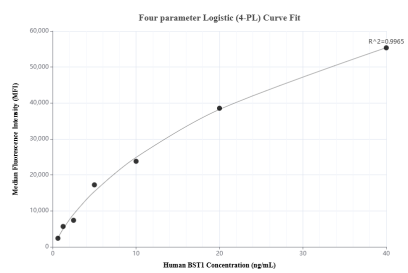
## Selected Validation Data



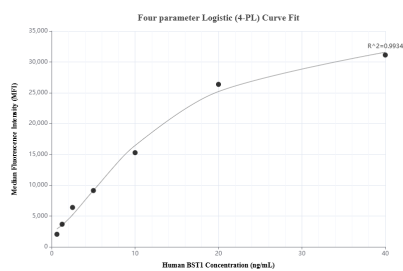
Sandwich ELISA standard curve of MP01225-4, Human CD157 Recombinant Matched Antibody Pair - PBS only. 84333-1-PBS was coated to a plate as the capture antibody and incubated with serial dilutions of standard RP02348. 84333-5-PBS was HRP conjugated as the detection antibody. Range: 19.5-1250 pg/mL.



The mean CD157 concentration was determined to be 2.0 ng/mL in A549 cell extract based on a 1.0 mg/mL extract load, 14.0 ng/mL in U-937 cell extract based on a 5.4 mg/mL extract load and 35.4 ng/mL in THP-1 cell extract based on a 1.2 mg/mL extract load.



Cytometric bead array standard curve of MP01225-1, BST1 Recombinant Matched Antibody Pair, PBS Only. Capture antibody: 84333-1-PBS. Detection antibody: 84333-2-PBS. Standard: RP02348. Range: 0.625-40 ng/mL.



Cytometric bead array standard curve of MP01225-2, BST1 Recombinant Matched Antibody Pair, PBS Only. Capture antibody: 84333-1-PBS. Detection antibody: 84333-3-PBS. Standard: RP02348. Range: 0.625-40 ng/mL.