

For Research Use Only

INTS1 Recombinant antibody, PBS Only

Catalog Number: 84339-5-PBS



Basic Information

Catalog Number:

84339-5-PBS

Size:

100ug , Concentration: 1 mg/ml by Nanodrop;

Source:

Rabbit

Isotype:

IgG

Immunogen Catalog Number:

AG35428

GenBank Accession Number:

BC069262

GeneID (NCBI):

26173

UNIPROT ID:

Q8N201

Full Name:

integrator complex subunit 1

Observed MW:

245 kDa

Purification Method:

Protein A purification

CloneNo.:

241627B1

Applications

Tested Applications:

WB, Indirect ELISA

Species Specificity:

human, mouse

Background Information

INTS1 is a component of the Integrator (INT) complex, a complex involved in the small nuclear RNAs (snRNA) U1 and U2 transcription and in their 3'-box-dependent processing.

Storage

Storage:

Store at -80°C.

Storage Buffer:

PBS Only

For technical support and original validation data for this product please contact:

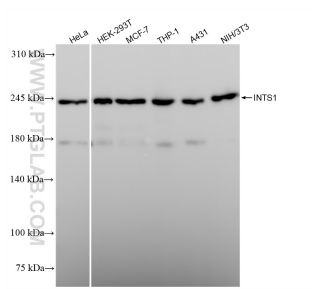
T: 1 (888) 4PTGLAB (1-888-478-4522) (toll free in USA), or 1(312) 455-8498 (outside USA)

E: proteintech@ptglab.com

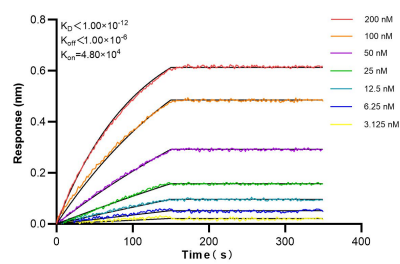
W: ptglab.com

This product is exclusively available under Proteintech Group brand and is not available to purchase from any other manufacturer.

Selected Validation Data



Various lysates were subjected to SDS PAGE followed by western blot with 84339-5-RR (INTS1 antibody) at dilution of 1:10000 incubated at room temperature for 1.5 hours. This data was developed using the same antibody clone with 84339-5-PBS in a different storage buffer formulation.



Biolayer interferometry (BLI) kinetic assays of 84339-5-RR against Human INTS1 were performed. The affinity constant is below 1 pM.