

For Research Use Only

# ORAI3 Recombinant antibody, PBS Only (Detector)

Catalog Number: 84340-2-PBS



## Basic Information

<b>Catalog Number:</b> 84340-2-PBS	<b>GenBank Accession Number:</b> BC006126	<b>Purification Method:</b> Protein A purification
<b>Size:</b> 100ug , Concentration: 1 mg/ml by Nanodrop;	<b>GeneID (NCBI):</b> 93129	<b>CloneNo.:</b> 241568A2
<b>Source:</b> Rabbit	<b>UNIPROT ID:</b> Q9BRQ5	
<b>Isotype:</b> IgG	<b>Full Name:</b> ORAI calcium release-activated calcium modulator 3	
<b>Immunogen Catalog Number:</b> AG36135	<b>Calculated MW:</b> 295 aa, 32 kDa	
	<b>Observed MW:</b> ~30 kDa ~60 kDa	

## Applications

**Tested Applications:**  
WB, IF/ICC, Cytometric bead array, Indirect ELISA

**Species Specificity:**  
human

## Product Information

84340-2-PBS targets ORAI3 as part of a matched antibody pair:

MP01228-1: 84340-3-PBS capture and 84340-2-PBS detection (validated in Cytometric bead array)

Unconjugated rabbit recombinant monoclonal antibody in PBS only (BSA and azide free) storage buffer at a concentration of 1 mg/mL, ready for conjugation. Created using Proteintech's proprietary in-house recombinant technology. Recombinant production enables unrivalled batch-to-batch consistency, easy scale-up, and future security of supply.

This conjugation ready format makes antibodies ideal for use in many applications including: ELISAs, multiplex assays requiring matched pairs, mass cytometry, and multiplex imaging applications. Antibody use should be optimized by the end user for each application and assay.

## Background Information

ORAI3, also named TMEM142C, is a key regulator or component of store-operated Ca<sup>2+</sup> channels and transcription factor NFAT nuclear import. ORAI3 channels appeared to differ from Orai1 and -2 in being somewhat resistant to Ca<sup>2+</sup> depotentiation. The molecular weight of monomers and dimers for Orai3 is about 30-35 kDa and 60-70 kDa (PMID: 20971921; 17293345; 22580508).

## Storage

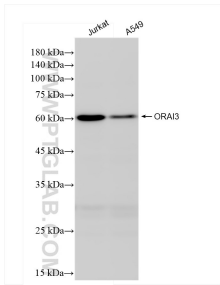
**Storage:**  
Store at -80°C.

**Storage Buffer:**  
PBS Only

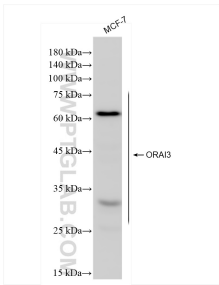
For technical support and original validation data for this product please contact:  
T: 1 (888) 4PTGLAB (1-888-478-4522) (toll free in USA), or 1(312) 455-8498 (outside USA)  
E: [proteintech@ptglab.com](mailto:proteintech@ptglab.com)  
W: [ptglab.com](http://ptglab.com)

This product is exclusively available under Proteintech Group brand and is not available to purchase from any other manufacturer.

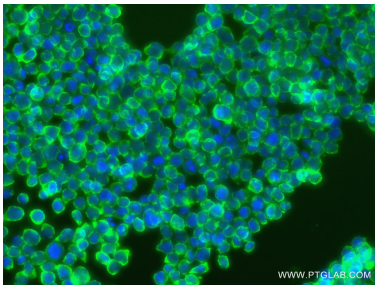
Selected Validation Data



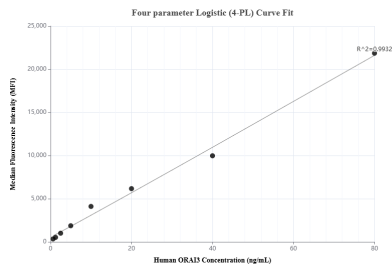
Various lysates were subjected to SDS PAGE followed by western blot with 84340-2-RR (ORAI3 antibody) at dilution of 1:3000 incubated at room temperature for 1.5 hours. This data was developed using the same antibody clone with 84340-2-PBS in a different storage buffer formulation.



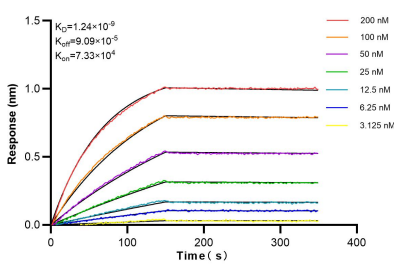
MCF-7 cells were subjected to SDS PAGE followed by western blot with 84340-2-RR (ORAI3 antibody) at dilution of 1:3000 incubated at room temperature for 1.5 hours. This data was developed using the same antibody clone with 84340-2-PBS in a different storage buffer formulation.



Immunofluorescent analysis of (4% PFA) fixed Jurkat cells using ORAI3 antibody (84340-2-RR, Clone: 241568A2 ) at dilution of 1:400 and CoraLite®488-Conjugated Goat Anti-Rabbit IgG(H+L) (SA00013-2). This data was developed using the same antibody clone with 84340-2-PBS in a different storage buffer formulation.



Cytometric bead array standard curve of MP01228-1, ORAI3 Recombinant Matched Antibody Pair, PBS Only. Capture antibody: 84340-3-PBS. Detection antibody: 84340-2-PBS. Standard: Ag36135. Range: 0.625-80 ng/mL



Biolayer interferometry (BLI) kinetic assays of 84340-2-RR against Human ORAI3 were performed. The affinity constant is 1.24 nM.