

For Research Use Only

CD33 Recombinant antibody, PBS Only (Detector)

Catalog Number: 84341-1-PBS



Basic Information

Catalog Number: 84341-1-PBS	GenBank Accession Number: BC028152	Purification Method: Protein A purification
Size: 100ug , Concentration: 1 mg/ml by Nanodrop;	GeneID (NCBI): 945	CloneNo.: 241711A6
Source: Rabbit	UNIPROT ID: P20138	
Isotype: IgG	Full Name: CD33 molecule	
	Calculated MW: 364 aa, 40 kDa	

Applications

Tested Applications:
Cytometric bead array, Sandwich ELISA, Indirect ELISA, Sample test

Species Specificity:
human

Product Information

84341-1-PBS targets CD33 as part of a matched antibody pair:

MP01254-1: 84341-2-PBS capture and 84341-1-PBS detection (validated in Cytometric bead array, Sandwich ELISA)

Unconjugated rabbit recombinant monoclonal antibody in PBS only (BSA and azide free) storage buffer at a concentration of 1 mg/mL, ready for conjugation. Created using Proteintech's proprietary in-house recombinant technology. Recombinant production enables unrivalled batch-to-batch consistency, easy scale-up, and future security of supply.

This conjugation ready format makes antibodies ideal for use in many applications including: ELISAs, multiplex assays requiring matched pairs, mass cytometry, and multiplex imaging applications. Antibody use should be optimized by the end user for each application and assay.

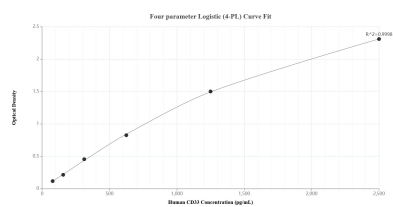
Storage

Storage:
Store at -80°C.
Storage Buffer:
PBS Only

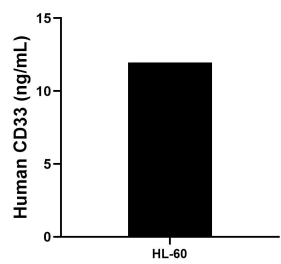
For technical support and original validation data for this product please contact:
T: 1 (888) 4PTGLAB (1-888-478-4522) (toll free in USA), or 1(312) 455-8498 (outside USA)
E: proteintech@ptglab.com
W: ptglab.com

This product is exclusively available under Proteintech Group brand and is not available to purchase from any other manufacturer.

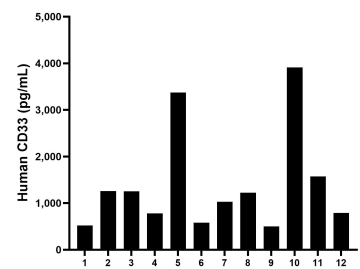
Selected Validation Data



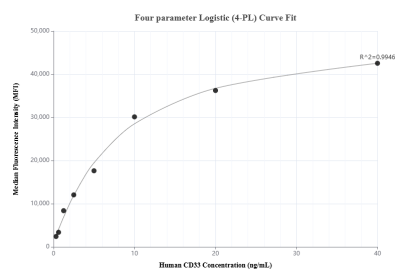
Sandwich ELISA standard curve of MP01254-1, Human CD33 Recombinant Matched Antibody Pair - PBS only. 84341-2-PBS was coated to a plate as the capture antibody and incubated with serial dilutions of standard Eg2138. 84341-1-PBS was HRP conjugated as the detection antibody. Range: 78.1-2500 pg/mL.



The mean CD33 concentration was determined to be 12.0 ng/mL in HL-60 cell extract based on a 1.4 mg/mL extract load.



Serum of twelve individual healthy human donors was measured. The CD33 concentration of detected samples was determined to be 1,399.3 pg/mL with a range of 520.6-3,913.4 pg/mL.



Cytometric bead array standard curve of MP01254-1, CD33 Recombinant Matched Antibody Pair, PBS Only. Capture antibody: 84341-2-PBS. Detection antibody: 84341-1-PBS. Standard: Eg2138. Range: 0.313-40 ng/mL.