

For Research Use Only

# GAPVD1 Recombinant antibody, PBS Only

Catalog Number: 84343-3-PBS



## Basic Information

### Catalog Number:

84343-3-PBS

### Size:

100ug , Concentration: 1 mg/ml by Nanodrop;

### Source:

Rabbit

### Isotype:

IgG

### Immunogen Catalog Number:

AG10492

### GenBank Accession Number:

BC021119

### GeneID (NCBI):

26130

### UNIPROT ID:

Q14C86

### Full Name:

GTPase activating protein and VPS9 domains 1

### Calculated MW:

1478 aa, 165 kDa

### Observed MW:

200-210 kDa

### Purification Method:

Protein A purification

### CloneNo.:

241609F12

## Applications

### Tested Applications:

WB, Indirect ELISA

### Species Specificity:

human, mouse, rat

## Background Information

GTPase activating protein and VPS9 domains 1(GAPVD1) is a multifunctional protein involved in cellular processes such as endocytosis, insulin receptor internalization, and GLUT4 trafficking. Its function is critical in maintaining cellular homeostasis and it interacts with various proteins, including those involved in endocytosis and circadian rhythm regulation.

## Storage

### Storage:

Store at -80°C.

### Storage Buffer:

PBS Only

For technical support and original validation data for this product please contact:

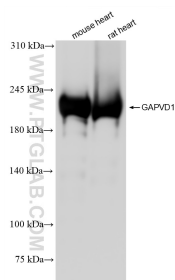
T: 1 (888) 4PTGLAB (1-888-478-4522) (toll free in USA), or 1(312) 455-8498 (outside USA)

E: [proteintech@ptglab.com](mailto:proteintech@ptglab.com)

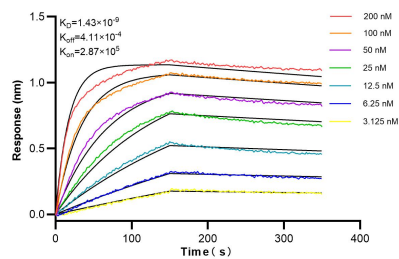
W: [ptglab.com](http://ptglab.com)

This product is exclusively available under Proteintech Group brand and is not available to purchase from any other manufacturer.

## Selected Validation Data



Various lysates were subjected to SDS PAGE followed by western blot with 84343-3-RR (GAPVD1 antibody) at dilution of 1:10000 incubated at room temperature for 1.5 hours. This data was developed using the same antibody clone with 84343-3-PBS in a different storage buffer formulation.



Biolayer interferometry (BLI) kinetic assays of 84343-3-RR against Human GAPVD1 were performed. The affinity constant is 1.43 nM.