

For Research Use Only

EPPK1 Recombinant antibody, PBS Only (Detector)

Catalog Number: 84344-2-PBS



Basic Information

Catalog Number: 84344-2-PBS	GenBank Accession Number: NM_031308.3	Purification Method: Protein A purification
Size: 100ug , Concentration: 1 mg/ml by Nanodrop;	GeneID (NCBI): 83481	CloneNo.: 241633B5
Source: Rabbit	UNIPROT ID: P58107	
Isotype: IgG	Full Name: epiplakin 1	
Immunogen Catalog Number: AG35749	Calculated MW: 555 kDa	
	Observed MW: 500-600 kDa	

Applications

Tested Applications:
WB, IF/ICC, FC (Intra), Cytometric bead array, Indirect ELISA

Species Specificity:
human

Product Information

84344-2-PBS targets EPPK1 as part of a matched antibody pair:

MP01220-1: 84344-3-PBS capture and 84344-2-PBS detection (validated in Cytometric bead array)

MP01220-2: 84344-4-PBS capture and 84344-2-PBS detection (validated in Cytometric bead array)

Unconjugated rabbit recombinant monoclonal antibody in PBS only (BSA and azide free) storage buffer at a concentration of 1 mg/mL, ready for conjugation. Created using Proteintech's proprietary in-house recombinant technology. Recombinant production enables unrivalled batch-to-batch consistency, easy scale-up, and future security of supply.

This conjugation ready format makes antibodies ideal for use in many applications including: ELISAs, multiplex assays requiring matched pairs, mass cytometry, and multiplex imaging applications. Antibody use should be optimized by the end user for each application and assay.

Background Information

Epplakin 1 (EPPK1), belonging to the plakin family, is involved in connecting intermediate filaments and regulating their reorganization in stress response. Studies have shown that EPPK1 is involved in the progression of various cancers, such as liver cancer, cervical cancer, and bladder urothelial carcinoma.

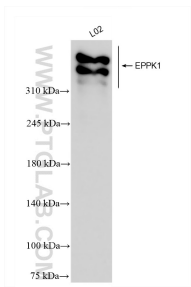
Storage

Storage:
Store at -80°C.
Storage Buffer:
PBS only, pH7.3

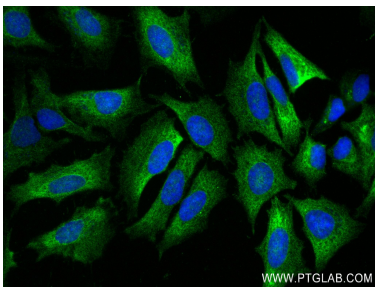
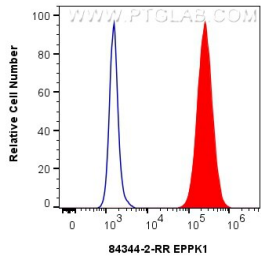
For technical support and original validation data for this product please contact:
T: 1 (888) 4PTGLAB (1-888-478-4522) (toll free in USA), or 1(312) 455-8498 (outside USA)
E: proteintech@ptglab.com
W: ptglab.com

This product is exclusively available under Proteintech Group brand and is not available to purchase from any other manufacturer.

Selected Validation Data

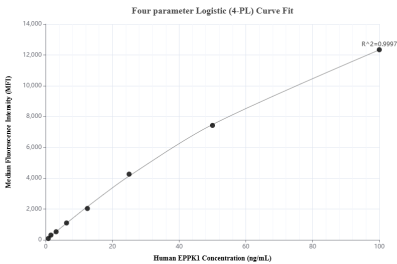


L02 cells were subjected to SDS PAGE followed by western blot with 84344-2-RR (EPPK1 antibody) at dilution of 1:10000 incubated at room temperature for 1.5 hours. This data was developed using the same antibody clone with 84344-2-PBS in a different storage buffer formulation.

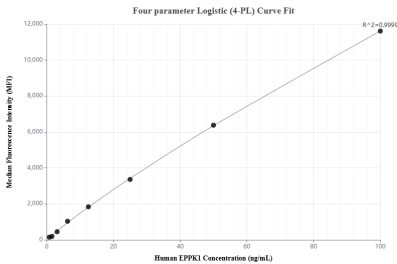


Immunofluorescent analysis of (-20°C Ethanol) fixed HeLa cells using EPPK1 antibody (84344-2-RR, Clone: 241633B5) at dilution of 1:250 and CoraLite®488-Conjugated Goat Anti-Rabbit IgG(H+L) (SA00013-2). This data was developed using the same antibody clone with 84344-2-PBS in a different storage buffer formulation.

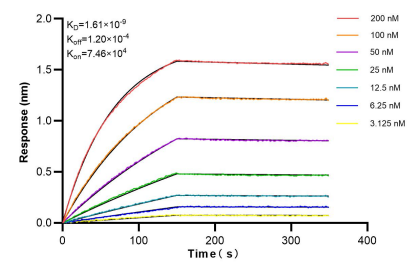
1x10⁶ MCF-7 cells were intracellularly stained with 0.25 ug EPPK1 Recombinant antibody (84344-2-RR, Clone:241633B5) and CoraLite®488-Conjugated Goat Anti-Rabbit IgG(H+L) (SA00013-2)(red), or 0.25 ug Rabbit IgG Isotype Control RecAb (98136-1-RR, Clone: 240953C9) (blue). Cells were fixed with 4% PFA and permeabilized with Flow Cytometry Perm Buffer (PF00011-C). This data was developed using the same antibody clone with 84344-2-PBS in a



Cytometric bead array standard curve of MP01220-1, EPPK1 Recombinant Matched Antibody Pair, PBS Only. Capture antibody: 84344-3-PBS. Detection antibody: 84344-2-PBS. Standard: Ag35749. Range: 0.781-100 ng/mL.



Cytometric bead array standard curve of MP01220-2, EPPK1 Recombinant Matched Antibody Pair, PBS Only. Capture antibody: 84344-4-PBS. Detection antibody: 84344-2-PBS. Standard: Ag35749. Range: 0.781-100 ng/mL.



Bilayer interferometry (BLI) kinetic assays of 84344-2-RR against Human EPPK1 were performed. The affinity constant is 1.61 nM.