

For Research Use Only

EPPK1 Recombinant antibody

Catalog Number: 84344-2-RR



Basic Information

Catalog Number:	84344-2-RR	GenBank Accession Number:	NM_031308.3	Purification Method:	Protein A purification
Size:	100ul , Concentration: 1000 µg/ml by Nanodrop;	GeneID (NCBI):	83481	CloneNo.:	241633B5
Source:	Rabbit	UNIPROT ID:	P58107	Recommended Dilutions:	WB 1:5000-1:50000 IF/ICC 1:125-1:500
Isotype:	IgG	Full Name:	epiplakin 1		
Immunogen Catalog Number:	AG35749	Calculated MW:	555 kDa		
		Observed MW:	500-600 kDa		

Applications

Tested Applications:	WB, IF/ICC, FC (Intra), ELISA	Positive Controls:	
Species Specificity:	human	WB : L02 cells,	
		IF/ICC : HeLa cells,	

Background Information

Epplakin 1 (EPPK1), belonging to the plakin family, is involved in connecting intermediate filaments and regulating their reorganization in stress response. Studies have shown that EPPK1 is involved in the progression of various cancers, such as liver cancer, cervical cancer, and bladder urothelial carcinoma.

Storage

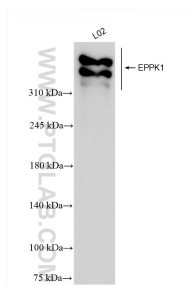
Storage:
Store at -20°C. Stable for one year after shipment.
Storage Buffer:
PBS with 0.02% sodium azide and 50% glycerol
Aliquoting is unnecessary for -20°C storage

*** 20ul sizes contain 0.1% BSA

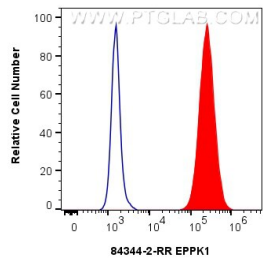
For technical support and original validation data for this product please contact:
T: 1 (888) 4PTGLAB (1-888-478-4522) (toll free in USA), or 1(312) 455-8498 (outside USA)
E: proteintech@ptglab.com
W: ptglab.com

This product is exclusively available under Proteintech Group brand and is not available to purchase from any other manufacturer.

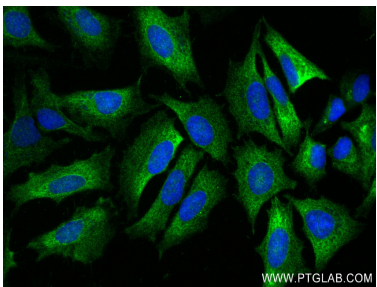
Selected Validation Data



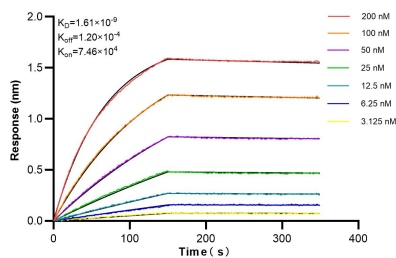
L02 cells were subjected to SDS PAGE followed by western blot with 84344-2-RR (EPPK1 antibody) at dilution of 1:10000 incubated at room temperature for 1.5 hours.



1x10⁶ MCF-7 cells were intracellularly stained with 0.25 ug EPPK1 Recombinant antibody (84344-2-RR, Clone:241633B5) and CoraLite®488-Conjugated Goat Anti-Rabbit IgG(H+L) (SA00013-2) (red), or 0.25 ug Rabbit IgG Isotype Control RecAb (98136-1-RR, Clone: 240953C9) (blue). Cells were fixed with 4% PFA and permeabilized with Flow Cytometry Perm Buffer (PF00011-C).



Immunofluorescent analysis of (-20°C Ethanol) fixed HeLa cells using EPPK1 antibody (84344-2-RR, Clone: 241633B5) at dilution of 1:250 and CoraLite®488-Conjugated Goat Anti-Rabbit IgG(H+L) (SA00013-2).



Biolayer interferometry (BLI) kinetic assays of 84344-2-RR against Human EPPK1 were performed. The affinity constant is 1.61 nM.