

For Research Use Only

Alpha-2-Macroglobulin Recombinant antibody

Catalog Number: 84347-5-RR



Basic Information

Catalog Number:

84347-5-RR

Size:

100ul , Concentration: 1000 µg/ml by 2
Nanodrop;

Source:

Rabbit

Isotype:

IgG

GenBank Accession Number:

NM_000014.6

GeneID (NCBI):

UNIPROT ID:

P01023

Full Name:

alpha-2-macroglobulin

Calculated MW:

163kDa

Observed MW:

185 kDa

Purification Method:

Protein A purification

CloneNo.:

241649D2

Recommended Dilutions:

WB 1:5000-1:50000

IF/ICC 1:125-1:500

Applications

Tested Applications:

WB, IF/ICC, FC (Intra), ELISA

Species Specificity:

human

Positive Controls:

WB : human plasma,

IF/ICC : HepG2 cells,

Background Information

Alpha-2-Macroglobulin, also known as α2-macroglobulin (α2M or A2M), is a protein abundant in the plasma of vertebrates and several invertebrates. A2M is an evolutionarily conserved arm of the innate immune system. It also mediates the proliferation of T cells and macrophages. A2M acts as a nonspecific protease inhibitor involved in the host defense mechanism that inactivates both endogenous and exogenous proteases, including trypsin, thrombin and collagenase. Even though A2M is produced predominantly by the liver, it may also be expressed in the reproductive tract, heart, and brain, and may have important roles in many physiological processes and medical illnesses including Alzheimer's disease.

Storage

Storage:

Store at -20°C. Stable for one year after shipment.

Storage Buffer:

PBS with 0.02% sodium azide and 50% glycerol pH 7.3.

Aliquoting is unnecessary for -20°C storage

*** 20ul sizes contain 0.1% BSA

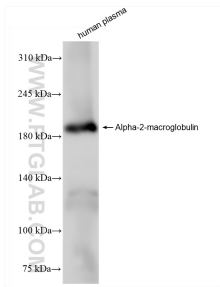
For technical support and original validation data for this product please contact:

T: 1 (888) 4PTGLAB (1-888-478-4522) (toll free
in USA), or 1(312) 455-8498 (outside USA)

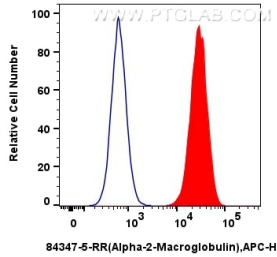
E: proteintech@ptglab.com
W: ptglab.com

This product is exclusively available under Proteintech Group brand and is not available to purchase from any other manufacturer.

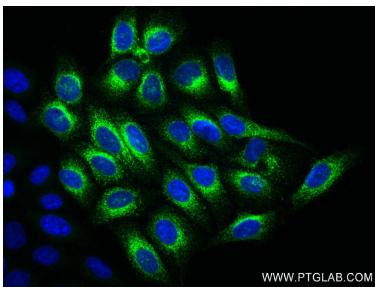
Selected Validation Data



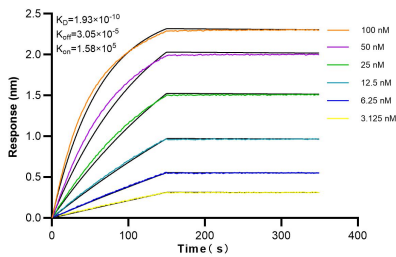
human plasma were subjected to SDS PAGE followed by western blot with 84347-5-RR (Alpha-2-Macroglobulin antibody) at dilution of 1:10000 incubated at room temperature for 1.5 hours.



1x10⁶ HepG2 cells were intracellularly stained with 0.25 ug Alpha-2-Macroglobulin Recombinant antibody (84347-5-RR, Clone:241649D2) and Multi-rAb CoraLite® Plus 647-Goat Anti-Rabbit Recombinant Secondary Antibody (H+L) (RGAR005) (red), or 0.25 ug Rabbit IgG Isotype Control Recombinant Antibody (98136-1-RR, Clone: 240953C9) (blue). Cells were fixed with 4% PFA and permeabilized with Flow Cytometry Perm Buffer (PF00011-C).



Immunofluorescent analysis of (-20°C Ethanol) fixed HepG2 cells using Alpha-2-Macroglobulin antibody (84347-5-RR, Clone: 241649D2) at dilution of 1:250 and CoraLite®488-Conjugated Goat Anti-Rabbit IgG(H+L) (SA00013-2).



Biolayer interferometry (BLI) kinetic assays of 84347-5-RR against Human Alpha-2-Macroglobulin were performed. The affinity constant is 0.193 nM.