

For Research Use Only

INSIG1 Recombinant antibody

Catalog Number: 84352-1-RR



Basic Information

Catalog Number:

84352-1-RR

Size:

100ul , Concentration: 1000 ug/ml by Nanodrop;

Source:

Rabbit

Isotype:

IgG

GenBank Accession Number:

NM_005542

GeneID (NCBI):

3638

UNIPROT ID:

O15503

Full Name:

insulin induced gene 1

Calculated MW:

30 kDa

Observed MW:

35 kDa

Purification Method:

Protein A purification

CloneNo.:

241353C7

Recommended Dilutions:

WB 1:5000-1:50000

Applications

Tested Applications:

WB, ELISA

Species Specificity:

human, mouse, rat

Positive Controls:

WB : mouse liver tissue, rat liver tissue

Storage

Storage:

Store at -20°C. Stable for one year after shipment.

Storage Buffer:

PBS with 0.02% sodium azide and 50% glycerol pH 7.3.

Aliquoting is unnecessary for -20°C storage

*** 20ul sizes contain 0.1% BSA

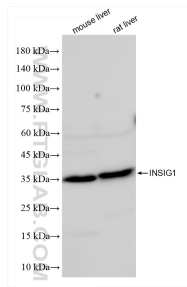
For technical support and original validation data for this product please contact:

T: 1 (888) 4PTGLAB (1-888-478-4522) (toll free in USA), or 1(312) 455-8498 (outside USA)

E: proteintech@ptglab.com
W: ptglab.com

This product is exclusively available under Proteintech Group brand and is not available to purchase from any other manufacturer.

Selected Validation Data



Various lysates were subjected to SDS PAGE followed by western blot with 84352-1-RR (INSIG1 antibody) at dilution of 1:10000 incubated at room temperature for 1.5 hours.