

For Research Use Only

TRIM43 Recombinant antibody

Catalog Number: 84354-1-RR



Basic Information

Catalog Number: 84354-1-RR	GenBank Accession Number: BC015353	Purification Method: Protein A purification
Size: 100ul , Concentration: 1000 ug/ml by Nanodrop;	GeneID (NCBI): 129868	CloneNo.: 241465G4
Source: Rabbit	UNIPROT ID: Q96BQ3	Recommended Dilutions: WB 1:5000-1:50000
Isotype: IgG	Full Name: tripartite motif-containing 43	
Immunogen Catalog Number: AG34926	Observed MW: 52-60 kDa	

Applications

Tested Applications: WB, ELISA	Positive Controls: WB : A431 cells, A594 cells, Jurkat cells, U-87 MG cells
Species Specificity: human	

Background Information

TRIM43 (tripartite motif containing 43), also known as TRIM43A. It is expected to be located in the cytoplasm. The calculated molecular weight of TRIM43 is 52 kDa. TRIM43 was also upregulated in herpesvirus-associated diseases in humans, including γ herpesvirus-associated tumors. As such, TRIM43 and its transcription factor DUX4 could potentially serve as biomarkers of active herpesviral replication and pathogenesis (PMID: 30420784).

Storage

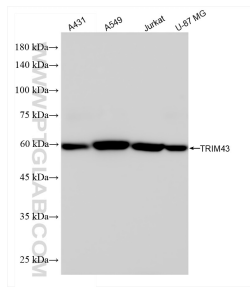
Storage:
Store at -20°C. Stable for one year after shipment.
Storage Buffer:
PBS with 0.02% sodium azide and 50% glycerol pH 7.3.
Aliquoting is unnecessary for -20°C storage

*** 20ul sizes contain 0.1% BSA

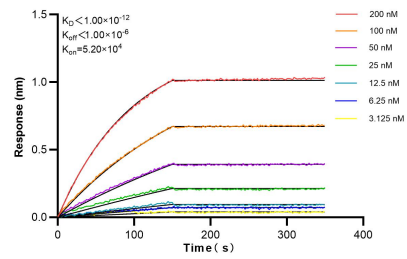
For technical support and original validation data for this product please contact:
T: 1 (888) 4PTGLAB (1-888-478-4522) (toll free in USA), or 1(312) 455-8498 (outside USA)
E: proteintech@ptglab.com
W: ptglab.com

This product is exclusively available under Proteintech Group brand and is not available to purchase from any other manufacturer.

Selected Validation Data



Various lysates were subjected to SDS PAGE followed by western blot with 84354-1-RR (TRIM43 antibody) at dilution of 1:10000 incubated at room temperature for 1.5 hours.



Biolayer interferometry (BLI) kinetic assays of 84354-1-RR against Human TRIM43 were performed. The affinity constant is below 1 pM.