

For Research Use Only

POLR2A Recombinant antibody

Catalog Number: 84357-1-RR



Basic Information

Catalog Number: 84357-1-RR	GenBank Accession Number: NM_000937	Purification Method: Protein A purification
Size: 100ul , Concentration: 500 ug/ml by Nanodrop;	GeneID (NCBI): 5430	CloneNo.: 240869E9
Source: Rabbit	UNIPROT ID: P24928	Recommended Dilutions: WB 1:1000-1:4000 IHC 1:50-1:500 IF/ICC 1:125-1:500
Isotype: IgG	Full Name: polymerase (RNA) II (DNA directed) polypeptide A, 220kDa	
	Calculated MW: 217 kDa	
	Observed MW: 245 kDa	

Applications

Tested Applications: WB, IHC, IF/ICC, ELISA	Positive Controls:
Species Specificity: human, monkey	WB : COS-7 cells,
Note-IHC: suggested antigen retrieval with TE buffer pH 9.0; (*) Alternatively, antigen retrieval may be performed with citrate buffer pH 6.0	IHC : mouse pancreas tissue,
	IF/ICC : HepG2 cells,

Background Information

DNA-directed RNA polymerase II subunit RPB1(POLR2A), is part of the core element of the basic RNA polymerase II transcription mechanism. During transcription elongation, Pol II moves on the template as the transcript elongates. Elongation is influenced by the phosphorylation status of the C-terminal domain (CTD) of Pol II largest subunit (RPB1), which serves as a platform for the assembly of factors that regulate transcription initiation, elongation, termination, and mRNA processing.

Storage

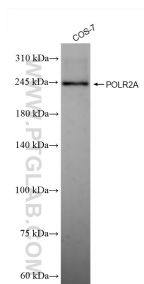
Storage:
Store at -20°C. Stable for one year after shipment.
Storage Buffer:
PBS with 0.02% sodium azide and 50% glycerol pH 7.3.
Aliquoting is unnecessary for -20°C storage

*** 20ul sizes contain 0.1% BSA

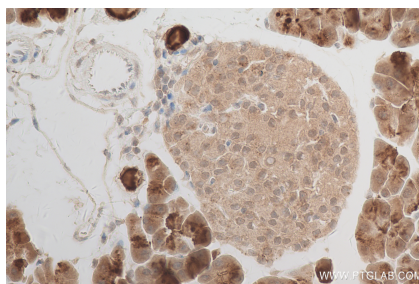
For technical support and original validation data for this product please contact:
T: 1 (888) 4PTGLAB (1-888-478-4522) (toll free in USA), or 1(312) 455-8498 (outside USA)
E: proteintech@ptglab.com
W: ptglab.com

This product is exclusively available under Proteintech Group brand and is not available to purchase from any other manufacturer.

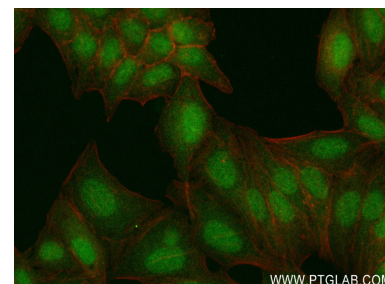
Selected Validation Data



COS-7 cells were subjected to SDS PAGE followed by western blot with 84357-1-RR (POLR2A antibody) at dilution of 1:2000 incubated at room temperature for 1.5 hours.



Immunohistochemical analysis of paraffin-embedded mouse pancreas tissue slide using 84357-1-RR (POLR2A antibody) at dilution of 1:200 (under 40x lens). Heat mediated antigen retrieval with Tris-EDTA buffer (pH 9.0).



Immunofluorescent analysis of (4% PFA) fixed HepG2 cells using POLR2A antibody (84357-1-RR, Clone: 240869E9) at dilution of 1:250 and CoraLite®488-Conjugated Goat Anti-Rabbit IgG(H+L) (SA00013-2), CL594-Phalloidin (red).