

For Research Use Only

# Mouse CD2 Recombinant antibody, PBS Only (Detector)

Catalog Number: 84360-4-PBS



## Basic Information

Catalog Number:

84360-4-PBS

Size:

100ug, Concentration: 1 mg/ml by Nanodrop;

Source:

Rabbit

Isotype:

IgG

GenBank Accession Number:

NM\_013486.2

GeneID (NCBI):

12481

UNIPROT ID:

P08920

Full Name:

CD2 antigen

Calculated MW:

38 kDa

Observed MW:

60 kDa

Purification Method:

Protein A purification

CloneNo.:

241548D7

## Applications

Tested Applications:

WB, IHC, Cytometric bead array, Sandwich ELISA, Indirect ELISA, Sample test

Species Specificity:

mouse

## Product Information

84360-4-PBS targets CD2 as part of a matched antibody pair:

MP01249-1: 84360-5-PBS capture and 84360-4-PBS detection (validated in Cytometric bead array, Sandwich ELISA)

Unconjugated rabbit recombinant monoclonal antibody in PBS only (BSA and azide free) storage buffer at a concentration of 1 mg/mL, ready for conjugation. Created using Proteintech's proprietary in-house recombinant technology. Recombinant production enables unrivalled batch-to-batch consistency, easy scale-up, and future security of supply.

This conjugation ready format makes antibodies ideal for use in many applications including: ELISAs, multiplex assays requiring matched pairs, mass cytometry, and multiplex imaging applications. Antibody use should be optimized by the end user for each application and assay.

## Background Information

CD2 is a cell surface glycoprotein present on a majority of thymocytes, all mature T cells and subset of NK cells but not on B lymphocytes. It is a pan T-cell marker. CD2 interacts with lymphocyte function-associated antigen (LFA-3/CD58) and CD48/BCM1 to mediate adhesion between T-cells and other cell types. CD2 is implicated in the triggering of T-cells, the cytoplasmic domain is implicated in the signaling function.

## Storage

Storage:

Store at -80°C.

Storage Buffer:

PBS Only

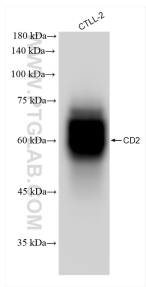
For technical support and original validation data for this product please contact:

T: 1 (888) 4PTGLAB (1-888-478-4522) (toll free in USA), or 1(312) 455-8498 (outside USA)

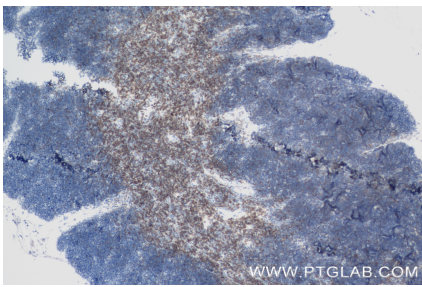
E: [proteintech@ptglab.com](mailto:proteintech@ptglab.com)  
W: [ptglab.com](http://ptglab.com)

This product is exclusively available under Proteintech Group brand and is not available to purchase from any other manufacturer.

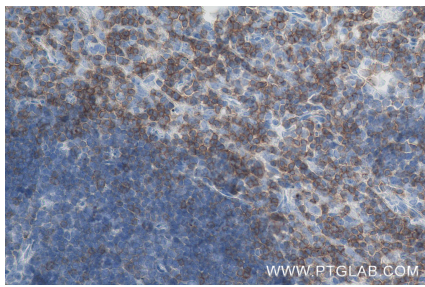
Selected Validation Data



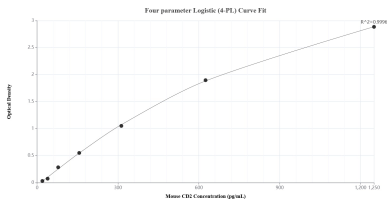
CTLL-2 cells were subjected to SDS PAGE followed by western blot with 84360-4-RR (CD2 antibody) at dilution of 1:1000 incubated at room temperature for 1.5 hours. This data was developed using the same antibody clone with 84360-4-PBS in a different storage buffer formulation.



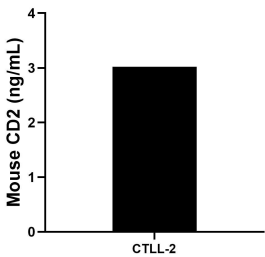
Immunohistochemical analysis of paraffin-embedded mouse thymus tissue slide using 84360-4-RR (CD2 antibody) at dilution of 1:1000 (under 10x lens). Heat mediated antigen retrieval with Tris-EDTA buffer (pH 9.0). This data was developed using the same antibody clone with 84360-4-PBS in a different storage buffer formulation.



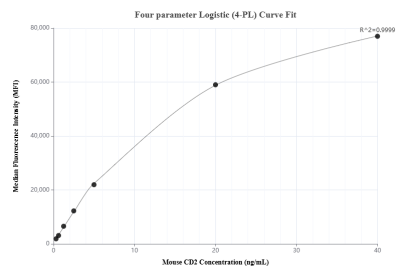
Immunohistochemical analysis of paraffin-embedded mouse thymus tissue slide using 84360-4-RR (CD2 antibody) at dilution of 1:1000 (under 40x lens). Heat mediated antigen retrieval with Tris-EDTA buffer (pH 9.0). This data was developed using the same antibody clone with 84360-4-PBS in a different storage buffer formulation.



Sandwich ELISA standard curve of MP01249-1, Mouse CD2 Recombinant Matched Antibody Pair - PBS only. 84360-5-PBS was coated to a plate as the capture antibody and incubated with serial dilutions of standard Eg1403. 84360-4-PBS was HRP conjugated as the detection antibody. Range: 19.5-1250 pg/mL



The mean CD2 concentration was determined to be 3.0 ng/mL in CTLL-2 cell extract based on a 0.9 mg/mL extract load.



Cytometric bead array standard curve of MP01249-1, MOUSE CD2 Recombinant Matched Antibody Pair, PBS Only. Capture antibody: 84360-5-PBS. Detection antibody: 84360-4-PBS. Standard: Eg1403. Range: 0.313-40 ng/mL