

For Research Use Only

# Placental lactogen Recombinant antibody, PBS Only (Capture/Detector)

Catalog Number: 84361-2-PBS



## Basic Information

<b>Catalog Number:</b> 84361-2-PBS	<b>GenBank Accession Number:</b> BC002717	<b>Purification Method:</b> Protein A purification
<b>Size:</b> 100ug , Concentration: 1 mg/ml by Nanodrop;	<b>GeneID (NCBI):</b> 1442	<b>CloneNo.:</b> 241625E1
<b>Source:</b> Rabbit	<b>UNIPROT ID:</b> PODML2	
<b>Isotype:</b> IgG	<b>Full Name:</b> chorionic somatomammotropin hormone 1 (placental lactogen)	
<b>Immunogen Catalog Number:</b> AG0201	<b>Calculated MW:</b> 25 kDa	
	<b>Observed MW:</b> 20-25 kDa	

## Applications

**Tested Applications:**  
WB, IHC, Cytometric bead array, Indirect ELISA

**Species Specificity:**  
human

## Product Information

84361-2-PBS targets Placental lactogen as part of a matched antibody pair:

MP01252-1: 84361-2-PBS capture and 84361-1-PBS detection (validated in Cytometric bead array)

MP01252-2: 84361-4-PBS capture and 84361-2-PBS detection (validated in Cytometric bead array)

Unconjugated rabbit recombinant monoclonal antibody in PBS only (BSA and azide free) storage buffer at a concentration of 1 mg/mL, ready for conjugation. Created using Proteintech's proprietary in-house recombinant technology. Recombinant production enables unrivalled batch-to-batch consistency, easy scale-up, and future security of supply.

This conjugation ready format makes antibodies ideal for use in many applications including: ELISAs, multiplex assays requiring matched pairs, mass cytometry, and multiplex imaging applications. Antibody use should be optimized by the end user for each application and assay.

## Background Information

Chorionic somatomammotropin hormone 1 (placental lactogen, CSH1), is a hormone with the molecular weight of 25 kDa. The data suggest that this protein may link with the Silver-Russell syndrome (SRS), a disease of pre- and postnatal growth restriction and a characteristic small, triangular face. SRS is also accompanied by other dysmorphic features including fifth finger clinodactyly and skeletal asymmetry.

## Storage

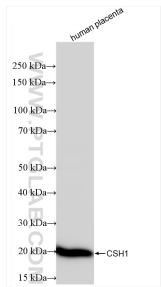
**Storage:**  
Store at -80°C.

**Storage Buffer:**  
PBS Only

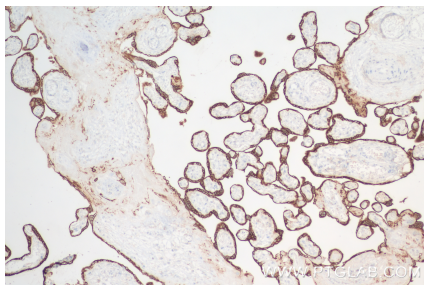
For technical support and original validation data for this product please contact:  
T: 1 (888) 4PTGLAB (1-888-478-4522) (toll free in USA), or 1(312) 455-8498 (outside USA)  
E: [proteintech@ptglab.com](mailto:proteintech@ptglab.com)  
W: [ptglab.com](http://ptglab.com)

This product is exclusively available under Proteintech Group brand and is not available to purchase from any other manufacturer.

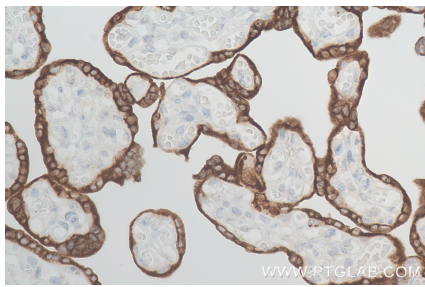
Selected Validation Data



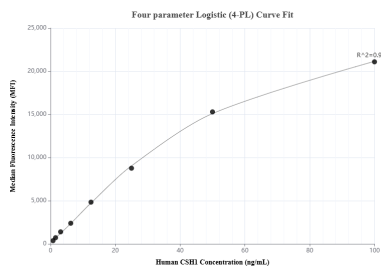
human placenta tissue were subjected to SDS PAGE followed by western blot with 84361-2-RR (CSH1 antibody) at dilution of 1:10000 incubated at room temperature for 1.5 hours. This data was developed using the same antibody clone with 84361-2-PBS in a different storage buffer formulation.



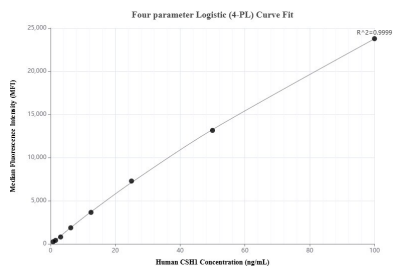
Immunohistochemical analysis of paraffin-embedded human placenta tissue slide using 84361-2-RR (Placental lactogen antibody) at dilution of 1:400 (under 10x lens). Heat mediated antigen retrieval with Tris-EDTA buffer (pH 9.0). This data was developed using the same antibody clone with 84361-2-PBS in a different storage buffer formulation.



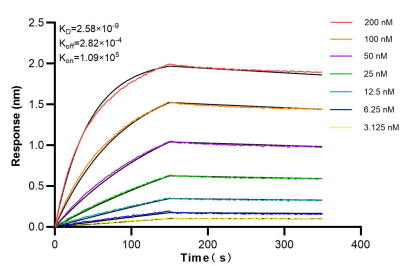
Immunohistochemical analysis of paraffin-embedded human placenta tissue slide using 84361-2-RR (Placental lactogen antibody) at dilution of 1:400 (under 40x lens). Heat mediated antigen retrieval with Tris-EDTA buffer (pH 9.0). This data was developed using the same antibody clone with 84361-2-PBS in a different storage buffer formulation.



Cytometric bead array standard curve of MP01252-1, CSH1 Recombinant Matched Antibody Pair, PBS Only. Capture antibody: 84361-2-PBS. Detection antibody: 84361-1-PBS. Standard: Ag0201. Range: 0.781-100 ng/mL.



Cytometric bead array standard curve of MP01252-2, CSH1 Recombinant Matched Antibody Pair, PBS Only. Capture antibody: 84361-4-PBS. Detection antibody: 84361-2-PBS. Standard: Ag0201. Range: 0.781-100 ng/mL.



Bi-layer interferometry (BLI) kinetic assays of 84361-2-RR against Human Placental lactogen were performed. The affinity constant is 2.58 nM.