

For Research Use Only

Placental lactogen Recombinant antibody

Catalog Number: 84361-2-RR



Basic Information

Catalog Number: 84361-2-RR	GenBank Accession Number: BC002717	Purification Method: Protein A purification
Size: 100ul , Concentration: 1000 µg/ml by Nanodrop;	GeneID (NCBI): 1442	CloneNo.: 241625E1
Source: Rabbit	UNIPROT ID: PODML2	Recommended Dilutions: WB 1:5000-1:50000 IHC 1:200-1:800
Isotype: IgG	Full Name: chorionic somatomammotropin hormone 1 (placental lactogen)	
Immunogen Catalog Number: AG0201	Calculated MW: 25 kDa	
	Observed MW: 20-25 kDa	

Applications

Tested Applications: WB, IHC, ELISA	Positive Controls:
Species Specificity: human	WB : human placenta tissue, IHC : human placenta tissue,
Note-IHC: suggested antigen retrieval with TE buffer pH 9.0; (*) Alternatively, antigen retrieval may be performed with citrate buffer pH 6.0	

Background Information

Chorionic somatomammotropin hormone 1 (placental lactogen, CSH1), is a hormone with the molecular weight of 25 kDa. The data suggest that this protein may link with the Silver-Russell syndrome (SRS), a disease of pre- and postnatal growth restriction and a characteristic small, triangular face. SRS is also accompanied by other dysmorphic features including fifth finger clinodactyly and skeletal asymmetry.

Storage

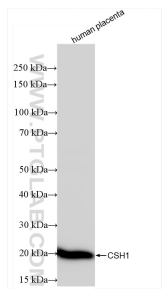
Storage:
Store at -20°C. Stable for one year after shipment.
Storage Buffer:
PBS with 0.02% sodium azide and 50% glycerol pH 7.3.
Aliquoting is unnecessary for -20°C storage

*** 20ul sizes contain 0.1% BSA

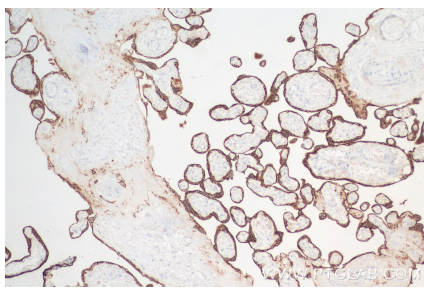
For technical support and original validation data for this product please contact:
T: 1 (888) 4PTGLAB (1-888-478-4522) (toll free in USA), or 1(312) 455-8498 (outside USA)
E: proteintech@ptglab.com
W: ptglab.com

This product is exclusively available under Proteintech Group brand and is not available to purchase from any other manufacturer.

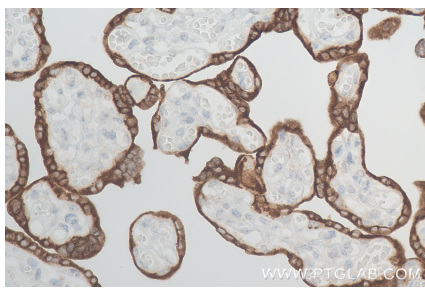
Selected Validation Data



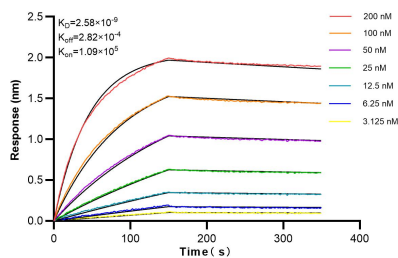
human placenta tissue were subjected to SDS PAGE followed by western blot with 84361-2-RR (CSH1 antibody) at dilution of 1:10000 incubated at room temperature for 1.5 hours.



Immunohistochemical analysis of paraffin-embedded human placenta tissue slide using 84361-2-RR (Placental lactogen antibody) at dilution of 1:400 (under 10x lens). Heat mediated antigen retrieval with Tris-EDTA buffer (pH 9.0).



Immunohistochemical analysis of paraffin-embedded human placenta tissue slide using 84361-2-RR (Placental lactogen antibody) at dilution of 1:400 (under 40x lens). Heat mediated antigen retrieval with Tris-EDTA buffer (pH 9.0).



Biolayer interferometry (BLI) kinetic assays of 84361-2-RR against Human Placental lactogen were performed. The affinity constant is 2.58 nM.