

For Research Use Only

Mouse SIGNR1/CD209b Recombinant antibody, PBS Only

Catalog Number: 84365-5-PBS



Basic Information

Catalog Number:

84365-5-PBS

Size:

100ug, Concentration: 1 mg/ml by Nanodrop;

Source:

Rabbit

Isotype:

IgG

Immunogen Catalog Number:

EG1497

GenBank Accession Number:

NM_026972.5

GeneID (NCBI):

69165

UNIPROT ID:

Q8CJ91-1

Full Name:

CD209b antigen

Calculated MW:

37 kDa

Observed MW:

45-50 kDa

Purification Method:

Protein A purification

CloneNo.:

241726B1

Applications

Tested Applications:

WB, IHC, IF-P, Indirect ELISA

Species Specificity:

mouse

Background Information

SIGNR1 (CD209b) is a mouse homolog of the human DC-SIGN receptor (PMID: 11581173). SIGNR1 is a type II transmembrane protein with an extracellular domain consisting of a neck region made up of four repeats of 28 amino acids and a carbohydrate recognition domain (PMID: 15583012). It is expressed on marginal zone macrophages and peritoneal macrophages and is a key receptor for the recognition and efficient clearance of pathogens by the innate immune system.

Storage

Storage:

Store at -80°C.

Storage Buffer:

PBS only, pH7.3

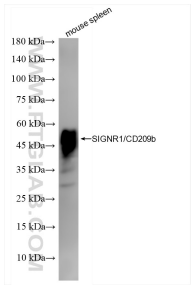
For technical support and original validation data for this product please contact:

T: 1 (888) 4PTGLAB (1-888-478-4522) (toll free in USA), or 1(312) 455-8498 (outside USA)

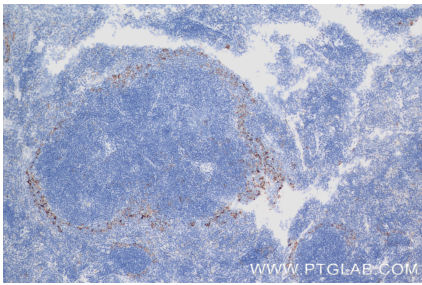
E: proteintech@ptglab.com
W: ptglab.com

This product is exclusively available under Proteintech Group brand and is not available to purchase from any other manufacturer.

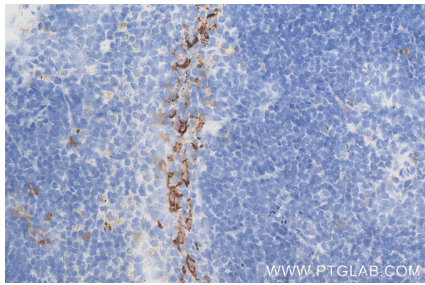
Selected Validation Data



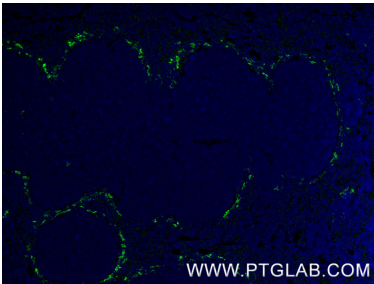
mouse spleen tissue were subjected to SDS PAGE followed by western blot with 84365-5-RR (SIGNR1/CD209b antibody) at dilution of 1:10000 incubated at room temperature for 1.5 hours. This data was developed using the same antibody clone with 84365-5-PBS in a different storage buffer formulation.



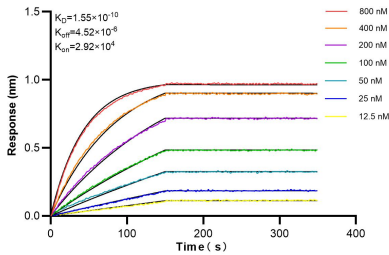
Immunohistochemical analysis of paraffin-embedded mouse spleen tissue slide using 84365-5-RR (SIGNR1/CD209b antibody) at dilution of 1:4000 (under 10x lens). Heat mediated antigen retrieval with Tris-EDTA buffer (pH 9.0). This data was developed using the same antibody clone with 84365-5-PBS in a different storage buffer formulation.



Immunohistochemical analysis of paraffin-embedded mouse spleen tissue slide using 84365-5-RR (SIGNR1/CD209b antibody) at dilution of 1:4000 (under 40x lens). Heat mediated antigen retrieval with Tris-EDTA buffer (pH 9.0). This data was developed using the same antibody clone with 84365-5-PBS in a different storage buffer formulation.



Immunofluorescent analysis of (4% PFA) fixed paraffin-embedded mouse spleen tissue using SIGNR1/CD209b antibody (84365-5-RR, Clone: 241726B1) at dilution of 1:500 and CoraLite® 488-Conjugated Goat Anti-Rabbit IgG(H+L) (SA00013-2). Heat mediated antigen retrieval with Tris-EDTA buffer (pH 9.0). This data was developed using the same antibody clone with 84365-5-PBS in a different storage buffer formulation.



Biolayer interferometry (BLI) kinetic assays of 84365-5-RR against Mouse SIGNR1/CD209b were performed. The affinity constant is 0.155 nM.