

For Research Use Only

# SIGNR1/CD209b Recombinant antibody

Catalog Number: 84365-5-RR



## Basic Information

<b>Catalog Number:</b> 84365-5-RR	<b>GenBank Accession Number:</b> NM_026972.5	<b>Purification Method:</b> Protein A purification
<b>Size:</b> 100ul , Concentration: 1000 µg/ml by Nanodrop;	<b>GeneID (NCBI):</b> 69165	<b>CloneNo.:</b> 241726B1
<b>Source:</b> Rabbit	<b>UNIPROT ID:</b> Q8CJ91-1	<b>Recommended Dilutions:</b> WB 1:5000-1:50000 IHC 1:2000-1:8000 IF-P 1:250-1:1000
<b>Isotype:</b> IgG	<b>Full Name:</b> CD209b antigen	
<b>Immunogen Catalog Number:</b> EG1497	<b>Calculated MW:</b> 37 kDa	
	<b>Observed MW:</b> 45-50 kDa	

## Applications

<b>Tested Applications:</b> WB, IHC, IF-P, ELISA	<b>Positive Controls:</b>
<b>Species Specificity:</b> mouse	<b>WB :</b> mouse spleen tissue,
<b>Note-IHC: suggested antigen retrieval with TE buffer pH 9.0; (*) Alternatively, antigen retrieval may be performed with citrate buffer pH 6.0</b>	<b>IHC :</b> mouse spleen tissue,
	<b>IF-P :</b> mouse spleen tissue,

## Background Information

SIGNR1 (CD209b) is a mouse homolog of the human DC-SIGN receptor (PMID: 11581173). SIGNR1 is a type II transmembrane protein with an extracellular domain consisting of a neck region made up of four repeats of 28 amino acids and a carbohydrate recognition domain (PMID: 15583012). It is expressed on marginal zone macrophages and peritoneal macrophages and is a key receptor for the recognition and efficient clearance of pathogens by the innate immune system.

## Storage

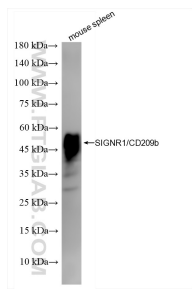
**Storage:**  
Store at -20°C. Stable for one year after shipment.  
**Storage Buffer:**  
PBS with 0.02% sodium azide and 50% glycerol, pH7.3  
**Aliquoting is unnecessary for -20°C storage**

\*\*\* 20ul sizes contain 0.1% BSA

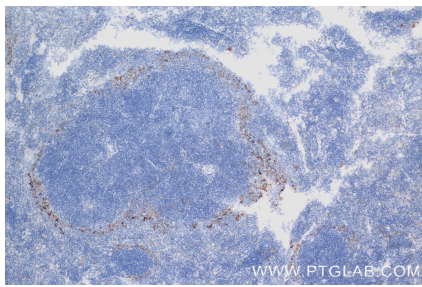
For technical support and original validation data for this product please contact:  
T: 1 (888) 4PTGLAB (1-888-478-4522) (toll free in USA), or 1(312) 455-8498 (outside USA)  
E: proteintech@ptglab.com  
W: ptglab.com

This product is exclusively available under Proteintech Group brand and is not available to purchase from any other manufacturer.

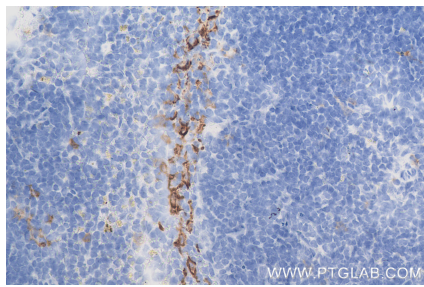
## Selected Validation Data



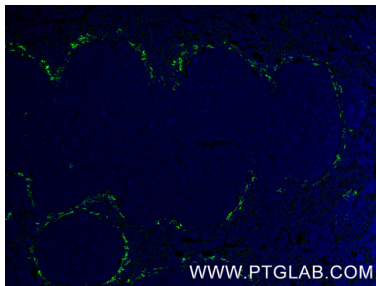
mouse spleen tissue were subjected to SDS PAGE followed by western blot with 84365-5-RR (SIGNR1/CD209b antibody) at dilution of 1:10000 incubated at room temperature for 1.5 hours.



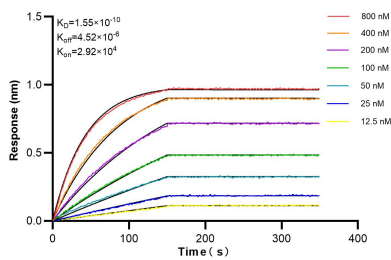
Immunohistochemical analysis of paraffin-embedded mouse spleen tissue slide using 84365-5-RR (SIGNR1/CD209b antibody) at dilution of 1:4000 (under 10x lens). Heat mediated antigen retrieval with Tris-EDTA buffer (pH 9.0).



Immunohistochemical analysis of paraffin-embedded mouse spleen tissue slide using 84365-5-RR (SIGNR1/CD209b antibody) at dilution of 1:4000 (under 40x lens). Heat mediated antigen retrieval with Tris-EDTA buffer (pH 9.0).



Immunofluorescent analysis of (4% PFA) fixed paraffin-embedded mouse spleen tissue using SIGNR1/CD209b antibody (84365-5-RR, Clone: 241726B1 ) at dilution of 1:500 and CoraLite® 488-Conjugated Goat Anti-Rabbit IgG(H+L) (SA00013-2). Heat mediated antigen retrieval with Tris-EDTA buffer (pH 9.0).



Biolayer interferometry (BLI) kinetic assays of 84365-5-RR against Mouse SIGNR1/CD209b were performed. The affinity constant is 0.155 nM.