

For Research Use Only

POLR3C Recombinant antibody, PBS Only (Capture/Detector)

Catalog Number: 84367-4-PBS



Basic Information

Catalog Number: 84367-4-PBS	GenBank Accession Number: BC002586	Purification Method: Protein A purification
Size: 100ug , Concentration: 1 mg/ml by Nanodrop;	GeneID (NCBI): 10623	CloneNo.: 241402E12
Source: Rabbit	UNIPROT ID: Q9BUI4	
Isotype: IgG	Full Name: polymerase (RNA) III (DNA directed) polypeptide C (62kD)	
Immunogen Catalog Number: AG27311	Calculated MW: 61 kDa	

Applications

Tested Applications:
Cytometric bead array, Sandwich ELISA, Indirect ELISA, Sample test

Species Specificity:
human

Product Information

84367-4-PBS targets POLR3C as part of a matched antibody pair:

MP01234-1: 84367-4-PBS capture and 84367-3-PBS detection (validated in Cytometric bead array)

MP01234-2: 84367-2-PBS capture and 84367-4-PBS detection (validated in Cytometric bead array)

MP01234-4: 84367-5-PBS capture and 84367-4-PBS detection (validated in Sandwich ELISA)

Unconjugated rabbit recombinant monoclonal antibody in PBS only (BSA and azide free) storage buffer at a concentration of 1 mg/mL, ready for conjugation. Created using Proteintech's proprietary in-house recombinant technology. Recombinant production enables unrivalled batch-to-batch consistency, easy scale-up, and future security of supply.

This conjugation ready format makes antibodies ideal for use in many applications including: ELISAs, multiplex assays requiring matched pairs, mass cytometry, and multiplex imaging applications. Antibody use should be optimized by the end user for each application and assay.

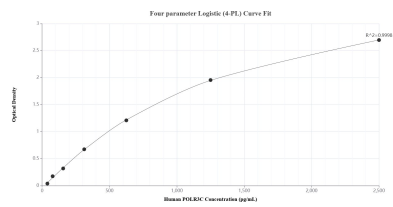
Storage

Storage:
Store at -80°C.
Storage Buffer:
PBS Only

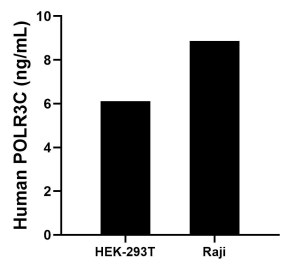
For technical support and original validation data for this product please contact:
T: 1 (888) 4PTGLAB (1-888-478-4522) (toll free in USA), or 1(312) 455-8498 (outside USA)
E: proteintech@ptglab.com
W: ptglab.com

This product is exclusively available under Proteintech Group brand and is not available to purchase from any other manufacturer.

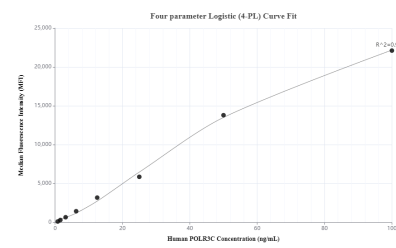
Selected Validation Data



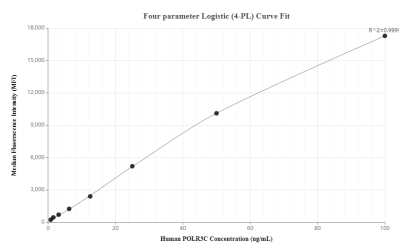
Sandwich ELISA standard curve of MP01234-4, Human POLR3C Recombinant Matched Antibody Pair - PBS only. 84367-5-PBS was coated to a plate as the capture antibody and incubated with serial dilutions of standard Ag27311. 84367-4-PBS was HRP conjugated as the detection antibody. Range: 39.1-2500 pg/mL.



The mean POLR3C concentration was determined to be 6.1 ng/mL in HEK-293T cell extract based on a 1.4 mg/mL extract load and 8.9 ng/mL in Raji cell extract based on a 1.2 mg/mL extract load.



Cytometric bead array standard curve of MP01234-1, POLR3C Recombinant Matched Antibody Pair, PBS Only. Capture antibody: 84367-4-PBS. Detection antibody: 84367-3-PBS. Standard: Ag27311. Range: 0.781-100 ng/mL.



Cytometric bead array standard curve of MP01234-2, POLR3C Recombinant Matched Antibody Pair, PBS Only. Capture antibody: 84367-2-PBS. Detection antibody: 84367-4-PBS. Standard: Ag27311. Range: 0.781-100 ng/mL.