

For Research Use Only

# POLR3C Recombinant antibody

Catalog Number: 84367-6-RR



## Basic Information

Catalog Number:

84367-6-RR

Size:

100ul , Concentration: 1000 µg/ml by Nanodrop;

Source:

Rabbit

Isotype:

IgG

Immunogen Catalog Number:

AG27311

GenBank Accession Number:

BC002586

GeneID (NCBI):

10623

UNIPROT ID:

Q9BUI4

Full Name:

polymerase (RNA) III (DNA directed)  
polypeptide C (62kD)

Calculated MW:

61 kDa

Observed MW:

58 kDa

Purification Method:

Protein A purification

CloneNo.:

241402A9

Recommended Dilutions:

WB 1:2000-1:16000

IF/ICC 1:1000-1:4000

## Applications

Tested Applications:

WB, IF/ICC, ELISA

Species Specificity:

human

Positive Controls:

WB : HEK-293T cells, HepG2 cells, HeLa cells

IF/ICC : HeLa cells,

## Background Information

Mutations in the POLR3A, POLR3C, POLR3E, and POLR3F subunits are associated with susceptibility to varicella zoster virus-induced encephalitis and pneumonitis (PMID: 34395528).

## Storage

Storage:

Store at -20°C. Stable for one year after shipment.

Storage Buffer:

PBS with 0.02% sodium azide and 50% glycerol, pH7.3

Aliquoting is unnecessary for -20°C storage

\*\*\* 20ul sizes contain 0.1% BSA

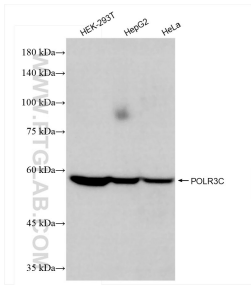
For technical support and original validation data for this product please contact:

T: 1 (888) 4PTGLAB (1-888-478-4522) (toll free  
in USA), or 1(312) 455-8498 (outside USA)

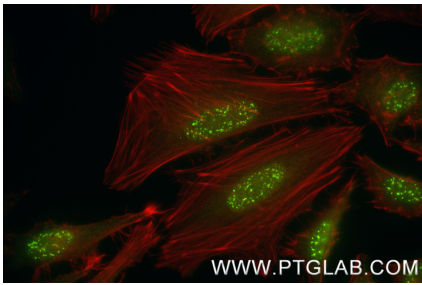
E: [proteintech@ptglab.com](mailto:proteintech@ptglab.com)  
W: [ptglab.com](http://ptglab.com)

This product is exclusively available under Proteintech Group brand and is not available to purchase from any other manufacturer.

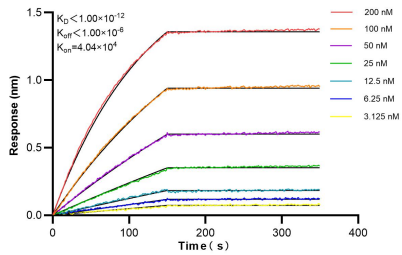
## Selected Validation Data



Various lysates were subjected to SDS PAGE followed by western blot with 84367-6-RR (POLR3C antibody) at dilution of 1:8000 incubated at room temperature for 1.5 hours.



Immunofluorescent analysis of (4% PFA) fixed HeLa cells using POLR3C antibody (84367-6-RR, Clone: 241402A9) at dilution of 1:2000 and CoraLite® 488-Conjugated Goat Anti-Rabbit IgG(H+L) (SA00013-2), CL594-Phalloidin (red).



Biolayer interferometry (BLI) kinetic assays of 84367-6-RR against Human POLR3C were performed. The affinity constant is below 1 pM.