

For Research Use Only

Mouse CD28 Recombinant antibody, PBS Only (Detector)

Catalog Number: 84368-4-PBS



Basic Information

Catalog Number:

84368-4-PBS

Size:

100ug, Concentration: 1 mg/ml by
Nanodrop;

Source:

Rabbit

Isotype:

IgG

GenBank Accession Number:

NM_007642.4

GeneID (NCBI):

12487

UNIPROT ID:

P31041

Full Name:

CD28 antigen

Calculated MW:

25 kDa

Purification Method:

Protein A purification

CloneNo.:

241707H6

Applications

Tested Applications:

IF/ICC, Cytometric bead array, Indirect ELISA

Species Specificity:

mouse

Product Information

84368-4-PBS targets CD28 as part of a matched antibody pair:

MP01248-3: 84368-5-PBS capture and 84368-4-PBS detection (validated in Cytometric bead array)

Unconjugated rabbit recombinant monoclonal antibody in PBS only (BSA and azide free) storage buffer at a concentration of 1 mg/mL, ready for conjugation. Created using Proteintech's proprietary in-house recombinant technology. Recombinant production enables unrivalled batch-to-batch consistency, easy scale-up, and future security of supply.

This conjugation ready format makes antibodies ideal for use in many applications including: ELISAs, multiplex assays requiring matched pairs, mass cytometry, and multiplex imaging applications. Antibody use should be optimized by the end user for each application and assay.

Background Information

CD28 (T-cell-specific surface glycoprotein CD28), also known as T44 and Tp44, is a 44 kD disulfide-linked homodimeric type I glycoprotein (PMID: 2162180). It is a member of the immunoglobulin superfamily and is expressed on most T lineage cells, NK cell subsets, and plasma cells (PMID: 2162180, 8386518). CD28 may affect in vivo immune responses by functioning both as a cell adhesion molecule linking B and T lymphocytes and as the surface component of a novel signal transduction pathway (PMID: 2162180, 3021470). CD28 binds both CD80 and CD86 with a highly conserved motif MYPPY in the CDR3-like loop (PMID: 15696168, 7964482). CD28 is considered a major co-stimulatory molecule, inducing T lymphocyte activation and IL-2 synthesis, and preventing cell death (PMID: 1348520).

Storage

Storage:

Store at -80°C.

Storage Buffer:

PBS Only

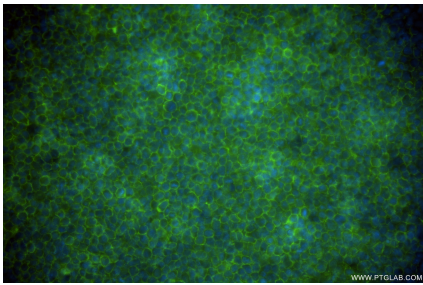
For technical support and original validation data for this product please contact:

T: 1 (888) 4PTGLAB (1-888-478-4522) (toll free
in USA), or 1(312) 455-8498 (outside USA)

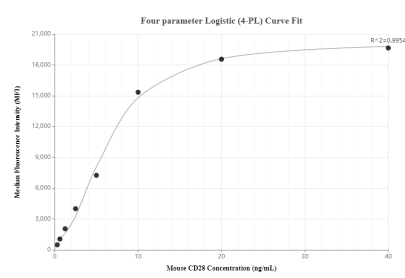
E: proteintech@ptglab.com
W: ptglab.com

This product is exclusively available under Proteintech Group brand and is not available to purchase from any other manufacturer.

Selected Validation Data



Immunofluorescent analysis of (4% PFA) fixed EL-4-B5 cells using CD28 antibody (84368-4-RR, Clone: 241707H6) at dilution of 1:200 and CoraLite®488-Conjugated Goat Anti-Rabbit IgG(H+L) (SA00013-2). This data was developed using the same antibody clone with 84368-4-PBS in a different storage buffer formulation.



Cytometric bead array standard curve of MP01248-3, MOUSE CD28 Recombinant Matched Antibody Pair, PBS Only. Capture antibody: 84368-5-PBS. Detection antibody: 84368-4-PBS. Standard: Eg1408. Range: 0.313-40 ng/mL.