

For Research Use Only

# THAP11 Recombinant antibody, PBS Only

Catalog Number: 84373-6-PBS



## Basic Information

Catalog Number:

84373-6-PBS

Size:

100ug, Concentration: 1 mg/ml by Nanodrop;

Source:

Rabbit

Isotype:

IgG

Immunogen Catalog Number:

AG19342

GenBank Accession Number:

BC012182

GeneID (NCBI):

57215

UNIPROT ID:

Q96EK4

Full Name:

THAP domain containing 11

Calculated MW:

314 aa, 34 kDa

Observed MW:

45 kDa

Purification Method:

Protein A purification

CloneNo.:

241590E5

## Applications

Tested Applications:

WB, IF/ICC, FC (Intra), Indirect ELISA

Species Specificity:

human, mouse

## Storage

Storage:

Store at -80°C.

Storage Buffer:

PBS Only

For technical support and original validation data for this product please contact:

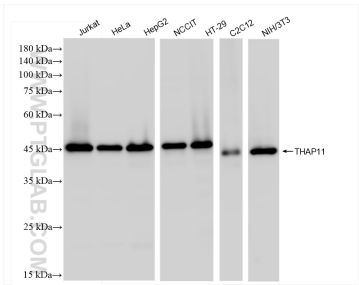
T: 1 (888) 4PTGLAB (1-888-478-4522) (toll free in USA), or 1(312) 455-8498 (outside USA)

E: [proteintech@ptglab.com](mailto:proteintech@ptglab.com)

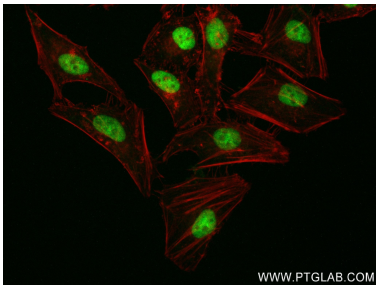
W: [ptglab.com](http://ptglab.com)

This product is exclusively available under Proteintech Group brand and is not available to purchase from any other manufacturer.

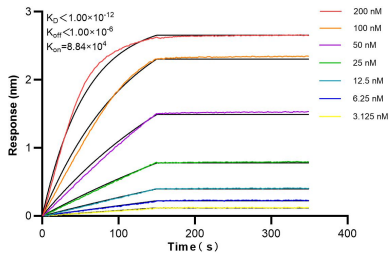
Selected Validation Data



Various lysates were subjected to SDS PAGE followed by western blot with 84373-6-RR (THAP11 antibody) at dilution of 1:10000 incubated at room temperature for 1.5 hours. This data was developed using the same antibody clone with 84373-6-PBS in a different storage buffer formulation.



1x10<sup>6</sup> HepG2 cells were intracellularly stained with 0.25 ug THAP11 Recombinant antibody (84373-6-RR, Clone:241590E5) and APC-Conjugated Goat Anti-Rabbit IgG(H+L) (red), or 0.25 ug Rabbit IgG Isotype Control Recombinant Antibody (98136-1-RR, Clone: 240953C9) (blue). Cells were fixed with 4% PFA and permeabilized with Flow Cytometry Perm Buffer (PF00011-C). This data was developed using the same antibody clone with 84373-6-PBS in a different storage buffer



Biolayer interferometry (BLI) kinetic assays of 84373-6-RR against Human THAP11 were performed. The affinity constant is below 1 pM.