

For Research Use Only

# THAP11 Recombinant antibody

Catalog Number: 84373-6-RR



## Basic Information

Catalog Number:

84373-6-RR

Size:

100ul, Concentration: 1000 µg/ml by

Nanodrop;

Source:

Rabbit

Isotype:

IgG

Immunogen Catalog Number:

AG19342

GenBank Accession Number:

BC012182

GeneID (NCBI):

57215

UNIPROT ID:

Q96EK4

Full Name:

THAP domain containing 11

Calculated MW:

314 aa, 34 kDa

Observed MW:

45 kDa

Purification Method:

Protein A purification

CloneNo.:

241590E5

Recommended Dilutions:

WB 1:5000-1:50000

IF/ICC 1:200-1:800

## Applications

Tested Applications:

WB, IF/ICC, FC (Intra), ELISA

Species Specificity:

human, mouse

Positive Controls:

WB : Jurkat cells, HeLa cells, HepG2 cells, NCCIT cells, HT-29 cells, C2C12 cells, NIH/3T3 cells

IF/ICC : HeLa cells,

## Storage

Storage:

Store at -20°C. Stable for one year after shipment.

Storage Buffer:

PBS with 0.02% sodium azide and 50% glycerol pH 7.3.

Aliquoting is unnecessary for -20°C storage

\*\*\* 20ul sizes contain 0.1% BSA

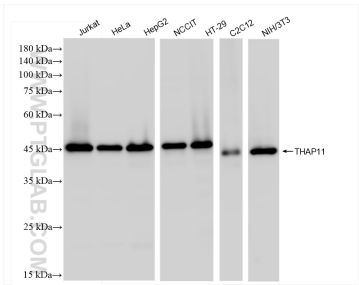
For technical support and original validation data for this product please contact:

T: 1 (888) 4PTGLAB (1-888-478-4522) (toll free in USA), or 1(312) 455-8498 (outside USA)

E: [proteintech@ptglab.com](mailto:proteintech@ptglab.com)  
W: [ptglab.com](http://ptglab.com)

This product is exclusively available under Proteintech Group brand and is not available to purchase from any other manufacturer.

Selected Validation Data



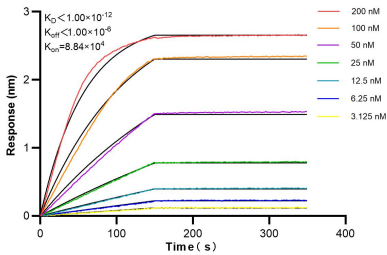
Various lysates were subjected to SDS PAGE followed by western blot with 84373-6-RR (THAP11 antibody) at dilution of 1:10000 incubated at room temperature for 1.5 hours.



Immunofluorescent analysis of (4% PFA) fixed HeLa cells using THAP11 antibody (84373-6-RR, Clone: 241590E5 ) at dilution of 1:400 and CoraLite®488-Conjugated Goat Anti-Rabbit IgG(H+L) (SA00013-2), CL594-Phalloidin (red).



1x10<sup>6</sup> HepG2 cells were intracellularly stained with 0.25 ug THAP11 Recombinant antibody (84373-6-RR, Clone:241590E5) and APC-Conjugated Goat Anti-Rabbit IgG(H+L)(red), or 0.25 ug Rabbit IgG Isotype Control Recombinant Antibody (98136-1-RR, Clone: 240953C9) (blue). Cells were fixed with 4% PFA and permeabilized with Flow Cytometry Perm Buffer (PF00011-C).



Biolayer interferometry (BLI) kinetic assays of 84373-6-RR against Human THAP11 were performed. The affinity constant is below 1 pM.