

For Research Use Only

HAPLN1 Recombinant antibody, PBS Only (Capture)

Catalog Number: 84374-5-PBS



Basic Information

Catalog Number: 84374-5-PBS	GenBank Accession Number: BC057808	Purification Method: Protein A purification
Size: 100ug , Concentration: 1 mg/ml by Nanodrop;	GeneID (NCBI): 1404	CloneNo.: 241588H5
Source: Rabbit	UNIPROT ID: P10915	
Isotype: IgG	Full Name: hyaluronan and proteoglycan link protein 1	
Immunogen Catalog Number: AG25221	Calculated MW: 40 kDa	

Applications

Tested Applications:
Sandwich ELISA, Indirect ELISA, Sample test

Species Specificity:
human

Product Information

84374-5-PBS targets HAPLN1 as part of a matched antibody pair:

MP01245-3: 84374-5-PBS capture and 84374-2-PBS detection (validated in Sandwich ELISA)

Unconjugated rabbit recombinant monoclonal antibody in PBS only (BSA and azide free) storage buffer at a concentration of 1 mg/mL, ready for conjugation. Created using Proteintech's proprietary in-house recombinant technology. Recombinant production enables unrivalled batch-to-batch consistency, easy scale-up, and future security of supply.

This conjugation ready format makes antibodies ideal for use in many applications including: ELISAs, multiplex assays requiring matched pairs, mass cytometry, and multiplex imaging applications. Antibody use should be optimized by the end user for each application and assay.

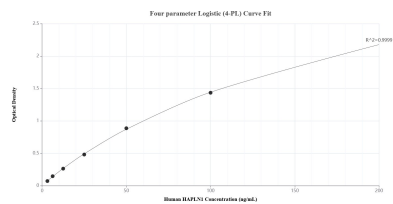
Storage

Storage:
Store at -80°C.
Storage Buffer:
PBS only, pH7.3

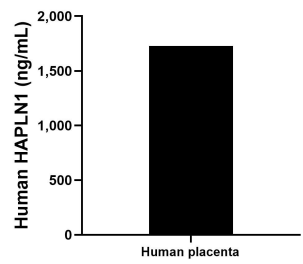
For technical support and original validation data for this product please contact:
T: 1 (888) 4PTGLAB (1-888-478-4522) (toll free in USA), or 1(312) 455-8498 (outside USA)
E: proteintech@ptglab.com
W: ptglab.com

This product is exclusively available under Proteintech Group brand and is not available to purchase from any other manufacturer.

Selected Validation Data



Sandwich ELISA standard curve of MP01245-3, Human HAPLN1 Recombinant Matched Antibody Pair - PBS only. 84374-5-PBS was coated to a plate as the capture antibody and incubated with serial dilutions of standard Ag25221. 84374-2-PBS was HRP conjugated as the detection antibody. Range: 3.13-200 ng/mL.



The mean HAPLN1 concentration was determined to be 1,727.92 ng/mL in human placenta tissue extract based on a 1.70 mg/mL extract load.