

For Research Use Only

PDGFR alpha/CD140a Recombinant antibody, PBS Only (Capture)

Catalog Number: 84383-7-PBS



Basic Information

Catalog Number: 84383-7-PBS	GenBank Accession Number: BC015186	Purification Method: Protein A purification
Size: 100ug , Concentration: 1 mg/ml by Nanodrop;	GeneID (NCBI): 5156	CloneNo.: 241658B1
Source: Rabbit	UNIPROT ID: P16234	
Isotype: IgG	Full Name: platelet-derived growth factor receptor, alpha polypeptide	
	Calculated MW: 123 kDa	

Applications

Tested Applications:
Sandwich ELISA, Indirect ELISA, Sample test

Species Specificity:
human

Product Information

84383-7-PBS targets PDGFR alpha/CD140a as part of a matched antibody pair:

MP01256-4: 84383-7-PBS capture and 98141-1-PBS detection (validated in Sandwich ELISA)

Unconjugated rabbit recombinant monoclonal antibody in PBS only (BSA and azide free) storage buffer at a concentration of 1 mg/mL, ready for conjugation. Created using Proteintech's proprietary in-house recombinant technology. Recombinant production enables unrivalled batch-to-batch consistency, easy scale-up, and future security of supply.

This conjugation ready format makes antibodies ideal for use in many applications including: ELISAs, multiplex assays requiring matched pairs, mass cytometry, and multiplex imaging applications. Antibody use should be optimized by the end user for each application and assay.

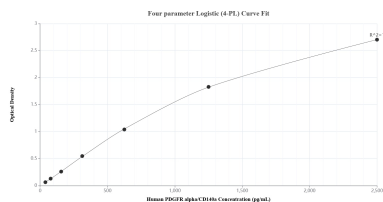
Storage

Storage:
Store at -80°C.
Storage Buffer:
PBS only, pH7.3

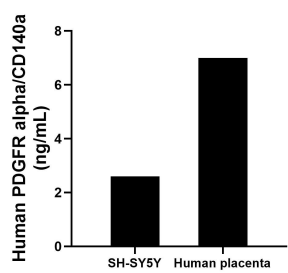
For technical support and original validation data for this product please contact:
T: 1 (888) 4PTGLAB (1-888-478-4522) (toll free in USA), or 1(312) 455-8498 (outside USA)
E: proteintech@ptglab.com
W: ptglab.com

This product is exclusively available under Proteintech Group brand and is not available to purchase from any other manufacturer.

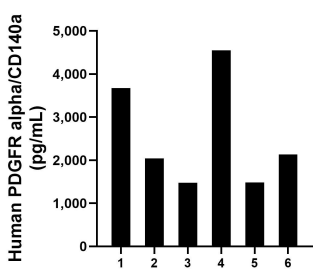
Selected Validation Data



Sandwich ELISA standard curve of MP01256-4, Human PDGFR alpha/CD140a Recombinant Matched Antibody Pair - PBS only. 84383-7-PBS was coated to a plate as the capture antibody and incubated with serial dilutions of standard RP00003. 98141-1-PBS was HRP conjugated as the detection antibody. Range: 39.1-2500 pg/mL



The mean PDGFR alpha/CD140a concentration was determined to be 2.6 ng/mL in SH-SY5Y cell extract based on a 1.0 mg/mL extract load and 7.0 ng/mL in human placenta tissue extract based on a 1.7 mg/mL extract load.



Serum of six individual healthy human donors was measured. The PDGFR alpha/CD140a concentration of detected samples was determined to be 2,557.7 pg/mL with a range of 1,472.3-4,545.6 pg/mL