

For Research Use Only

PDGFRA Recombinant monoclonal antibody, PBS Only (Detector)

Catalog Number: 84383-8-PBS



Basic Information

Catalog Number:

84383-8-PBS

Size:

100ug, Concentration: 1 mg/ml by Nanodrop;

Source:

Rabbit

Isotype:

IgG

GenBank Accession Number:

BC015186

GeneID (NCBI):

5156

UNIPROT ID:

P16234

Full Name:

platelet-derived growth factor receptor, alpha polypeptide

Calculated MW:

123 kDa

Purification Method:

Protein A purification

CloneNo.:

241658H4

Applications

Tested Applications:

Sandwich ELISA, Indirect ELISA

Species Specificity:

human

Product Information

84383-8-PBS targets PDGFRA as part of a matched antibody pair:

MP01256-4: 84383-7-PBS capture and 84383-8-PBS detection (validated in Sandwich ELISA)

Unconjugated rabbit recombinant monoclonal antibody in PBS only (BSA and azide free) storage buffer at a concentration of 1 mg/mL, ready for conjugation. Created using Proteintech's proprietary in-house recombinant technology. Recombinant production enables unrivalled batch-to-batch consistency, easy scale-up, and future security of supply.

This conjugation ready format makes antibodies ideal for use in many applications including: ELISAs, multiplex assays requiring matched pairs, mass cytometry, and multiplex imaging applications. Antibody use should be optimized by the end user for each application and assay.

Storage

Storage:

Store at -80°C.

Storage Buffer:

PBS only, pH7.3

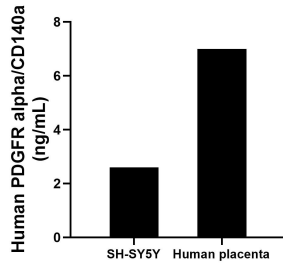
For technical support and original validation data for this product please contact:

T: 1 (888) 4PTGLAB (1-888-478-4522) (toll free in USA), or 1(312) 455-8498 (outside USA)

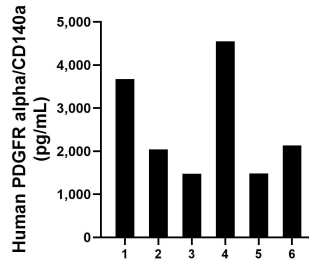
E: proteintech@ptglab.com
W: ptglab.com

This product is exclusively available under Proteintech Group brand and is not available to purchase from any other manufacturer.

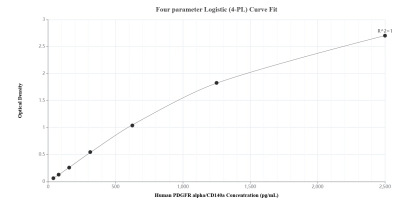
Selected Validation Data



The mean PDGFR alpha/CD140a concentration was determined to be 2.6 ng/mL in SH-SY5Y cell extract based on a 1.0 mg/mL extract load and 7.0 ng/mL in human placenta tissue extract based on a 1.7 mg/mL extract load.



Serum of six individual healthy human donors was measured. The PDGFR alpha/CD140a concentration of detected samples was determined to be 2,557.7 pg/mL with a range of 1,472.3-4,545.6 pg/mL.



Sandwich ELISA standard curve of MP01256-4, Human PDGFR alpha/CD140a Recombinant Matched Antibody Pair - PBS only. 84383-7-PBS was coated to a plate as the capture antibody and incubated with serial dilutions of standard RPO0003. 98141-1-PBS was HRP conjugated as the detection antibody. Range: 39.1-2500 pg/mL