

For Research Use Only

# IL-18R1/CD218a Recombinant antibody, PBS Only

Catalog Number: 84390-5-PBS



## Basic Information

<b>Catalog Number:</b> 84390-5-PBS	<b>GenBank Accession Number:</b> BC093975	<b>Purification Method:</b> Protein A purification
<b>Size:</b> 100ug, Concentration: 1 mg/ml by Nanodrop;	<b>GeneID (NCBI):</b> 8809	<b>CloneNo.:</b> 241673G6
<b>Source:</b> Rabbit	<b>UNIPROT ID:</b> Q13478	
<b>Isotype:</b> IgG	<b>Full Name:</b> interleukin 18 receptor 1	
	<b>Calculated MW:</b> 541 aa, 62 kDa	
	<b>Observed MW:</b> 60-75 kDa	

## Applications

**Tested Applications:**  
WB, IF/ICC, Indirect ELISA

**Species Specificity:**  
human

## Background Information

IL-18R1 (CD218a) is a component of the interleukin-18 receptor (IL-18R) complex, which is critical for the signaling of IL-18, a pro-inflammatory cytokine. This receptor complex, consisting of IL-18R1 and the IL-18 receptor accessory protein (IL-18RAP), belongs to the immunoglobulin-like family of interleukin-1 receptors (PMID: 35461924). IL-18R1 plays a significant role in inducing the production of interferon-gamma (IFN- $\gamma$ ) and other inflammatory cytokines, contributing to innate and adaptive immune responses (PMID: 2550053). It is also suggested to play a role in hypertension and chronic kidney disease, where the IL-18/IL-18R1 signaling axis may have diagnostic and therapeutic potential (PMID: 35461924).

## Storage

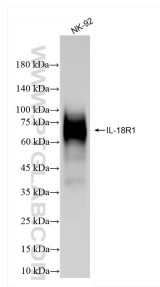
**Storage:**  
Store at -80°C.

**Storage Buffer:**  
PBS Only

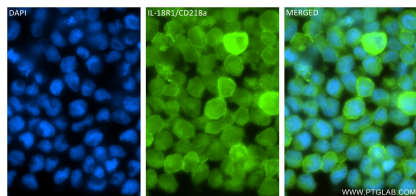
For technical support and original validation data for this product please contact:  
T: 1 (888) 4PTGLAB (1-888-478-4522) (toll free in USA), or 1(312) 455-8498 (outside USA)  
E: [proteintech@ptglab.com](mailto:proteintech@ptglab.com)  
W: [ptglab.com](http://ptglab.com)

This product is exclusively available under Proteintech Group brand and is not available to purchase from any other manufacturer.

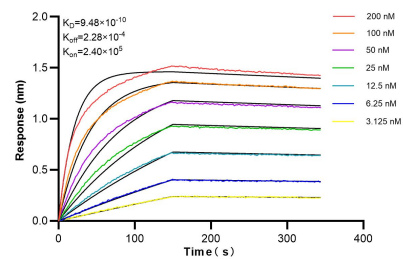
## Selected Validation Data



NK-92 cells were subjected to SDS PAGE followed by western blot with 84390-5-RR (IL18R1 antibody) at dilution of 1:1000 incubated at room temperature for 1.5 hours. This data was developed using the same antibody clone with 84390-5-PBS in a different storage buffer formulation.



Immunofluorescent analysis of (4% PFA) fixed NK-92 cells using IL-18R1/CD218a antibody (84390-5-RR, Clone: 241673G6 ) at dilution of 1:200 and Coralite® 488-Conjugated Goat Anti-Rabbit IgG(H+L) (SA00013-2). This data was developed using the same antibody clone with 84390-5-PBS in a different storage buffer formulation.



Biolayer interferometry (BLI) kinetic assays of 84390-5-RR against Human IL-18R1/CD218a were performed. The affinity constant is 0.948 nM.