

For Research Use Only

# IL12RB1 Recombinant antibody, PBS Only (Detector)

Catalog Number: 84391-4-PBS



## Basic Information

<b>Catalog Number:</b> 84391-4-PBS	<b>GenBank Accession Number:</b> BC029121	<b>Purification Method:</b> Protein A purification
<b>Size:</b> 100ug , Concentration: 1 mg/ml by Nanodrop;	<b>GeneID (NCBI):</b> 3594	<b>CloneNo.:</b> 241661D7
<b>Source:</b> Rabbit	<b>UNIPROT ID:</b> P42701	
<b>Isotype:</b> IgG	<b>Full Name:</b> interleukin 12 receptor, beta 1	
	<b>Calculated MW:</b> 662 aa, 73 kDa	

## Applications

**Tested Applications:**  
IF/ICC, Cytometric bead array, Sandwich ELISA, Indirect ELISA, Sample test

**Species Specificity:**  
human

## Product Information

84391-4-PBS targets IL12RB1 as part of a matched antibody pair:

MP01262-2: 84391-3-PBS capture and 84391-4-PBS detection (validated in Cytometric bead array, Sandwich ELISA)

Unconjugated rabbit recombinant monoclonal antibody in PBS only (BSA and azide free) storage buffer at a concentration of 1 mg/mL, ready for conjugation. Created using Proteintech's proprietary in-house recombinant technology. Recombinant production enables unrivalled batch-to-batch consistency, easy scale-up, and future security of supply.

This conjugation ready format makes antibodies ideal for use in many applications including: ELISAs, multiplex assays requiring matched pairs, mass cytometry, and multiplex imaging applications. Antibody use should be optimized by the end user for each application and assay.

## Background Information

IL12RB1, also named as Interleukin-12 receptor subunit beta-1 or CD212, is a 662 amino acid protein, which contains 5 fibronectin type-III domains and belongs to the type I cytokine receptor family. Type 2 subfamily. IL12RB1 localizes in the membrane and functions as an interleukin receptor which binds interleukin-12 with low affinity and is involved in IL12 transduction. Associated with IL12RB2 it forms a functional, high affinity receptor for IL12. Associates also with IL23R to form the interleukin-23 receptor which functions in IL23 signal transduction probably through activation of the Jak-Stat signaling cascade.

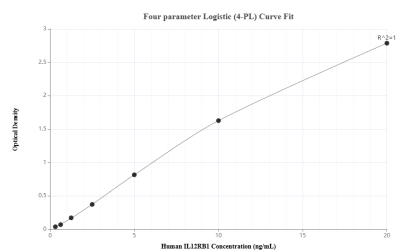
## Storage

**Storage:**  
Store at -80°C.  
**Storage Buffer:**  
PBS Only

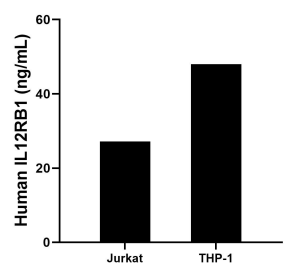
For technical support and original validation data for this product please contact:  
T: 1 (888) 4PTGLAB (1-888-478-4522) (toll free in USA), or 1(312) 455-8498 (outside USA)  
E: [proteintech@ptglab.com](mailto:proteintech@ptglab.com)  
W: [ptglab.com](http://ptglab.com)

This product is exclusively available under Proteintech Group brand and is not available to purchase from any other manufacturer.

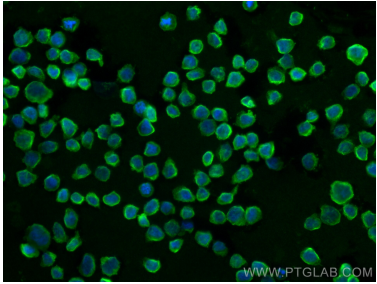
## Selected Validation Data



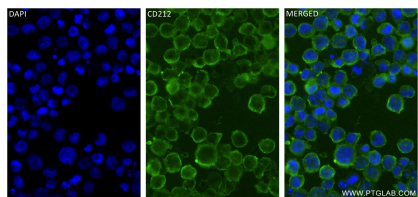
Sandwich ELISA standard curve of MP01262-2, Human IL12RB1 Recombinant Matched Antibody Pair - PBS only. 84391-3-PBS was coated to a plate as the capture antibody and incubated with serial dilutions of standard RP00005. 84391-4-PBS was HRP conjugated as the detection antibody. Range: 0.313-20 ng/mL



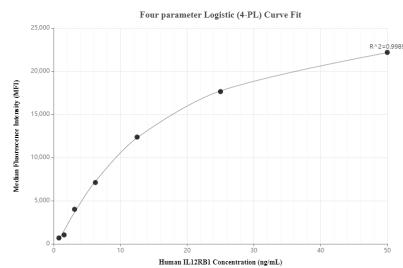
The mean IL12RB1 concentration was determined to be 27.14 ng/mL in Jurkat cell extract based on a 1.9 mg/mL extract load and 48.02 ng/mL in THP-1 cell extract based on a 1.5 mg/mL extract load.



Immunofluorescent analysis of (4% PFA) fixed THP-1 cells using IL12RB1 antibody (84391-4-RR, Clone: 241661D7 ) at dilution of 1:400 and CoraLite®488-Conjugated Goat Anti-Rabbit IgG(H+L) (SA00013-2). This data was developed using the same antibody clone with 84391-4-PBS in a different storage buffer formulation.



Immunofluorescent analysis of (4% PFA) fixed K-562 cells using IL12RB1 antibody (84391-4-RR, Clone: 241661D7 ) at dilution of 1:250 and CoraLite®488-Conjugated Goat Anti-Rabbit IgG(H+L) (SA00013-2). This data was developed using the same antibody clone with 84391-4-PBS in a different storage buffer formulation.



Cytometric bead array standard curve of MP01262-2, IL12RB1 Recombinant Matched Antibody Pair, PBS Only. Capture antibody: 84391-3-PBS. Detection antibody: 84391-4-PBS. Standard: RP00005. Range: 0.781-50 ng/mL