

For Research Use Only

PM20D1 Recombinant antibody, PBS Only (Detector)

Catalog Number: 84397-2-PBS



Basic Information

Catalog Number: 84397-2-PBS	GenBank Accession Number: BC063477	Purification Method: Protein A purification
Size: 100ug , Concentration: 1 mg/ml by Nanodrop;	GeneID (NCBI): 148811	CloneNo.: 241557E1
Source: Rabbit	UNIPROT ID: Q6GTS8	
Isotype: IgG	Full Name: peptidase M20 domain containing 1	
Immunogen Catalog Number: AG29154	Observed MW: 55-60 kDa	

Applications

Tested Applications:
WB, Cytometric bead array, Indirect ELISA

Species Specificity:
human, mouse

Product Information

84397-2-PBS targets PM20D1 as part of a matched antibody pair:

MP01268-1: 84397-1-PBS capture and 84397-2-PBS detection (validated in Cytometric bead array)

Unconjugated rabbit recombinant monoclonal antibody in PBS only (BSA and azide free) storage buffer at a concentration of 1 mg/mL, ready for conjugation. Created using Proteintech's proprietary in-house recombinant technology. Recombinant production enables unrivalled batch-to-batch consistency, easy scale-up, and future security of supply.

This conjugation ready format makes antibodies ideal for use in many applications including: ELISAs, multiplex assays requiring matched pairs, mass cytometry, and multiplex imaging applications. Antibody use should be optimized by the end user for each application and assay.

Background Information

PM20D1 is a secreted enzyme that regulates the endogenous N-fatty acyl amino acid (NAAs) tissue and circulating levels by functioning as a bidirectional NAA synthase/hydrolase (PMID: 27374330).

Storage

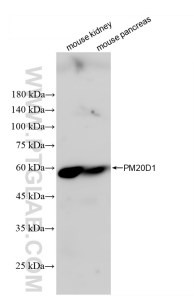
Storage:
Store at -80°C.

Storage Buffer:
PBS Only

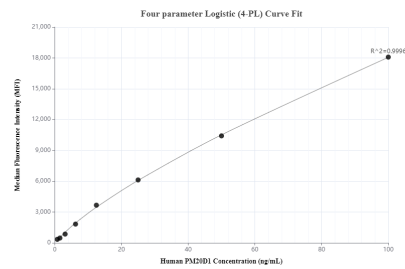
For technical support and original validation data for this product please contact:
T: 1 (888) 4PTGLAB (1-888-478-4522) (toll free in USA), or 1(312) 455-8498 (outside USA)
E: proteintech@ptglab.com
W: ptglab.com

This product is exclusively available under Proteintech Group brand and is not available to purchase from any other manufacturer.

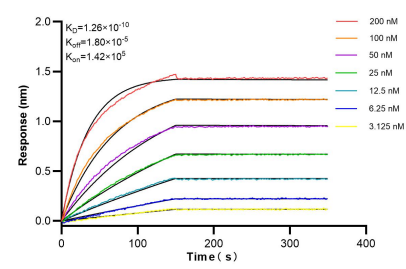
Selected Validation Data



Various lysates were subjected to SDS PAGE followed by western blot with 84397-2-RR (PM20D1 antibody) at dilution of 1:10000 incubated at room temperature for 1.5 hours. This data was developed using the same antibody clone with 84397-2-PBS in a different storage buffer formulation.



Cytometric bead array standard curve of MP01268-1, PM20D1 Recombinant Matched Antibody Pair, PBS Only. Capture antibody: 84397-1-PBS. Detection antibody: 84397-2-PBS. Standard: Ag29154. Range: 0.781-100 ng/mL.



Biolayer interferometry (BLI) kinetic assays of 84397-2-RR against Human PM20D1 were performed. The affinity constant is 0.126 nM.