

For Research Use Only

PM20D1 Recombinant antibody

Catalog Number: 84397-2-RR



Basic Information

Catalog Number: 84397-2-RR	GenBank Accession Number: BC063477	Purification Method: Protein A purification
Size: 100ul , Concentration: 1000 µg/ml by Nanodrop;	GeneID (NCBI): 148811	CloneNo.: 241557E1
Source: Rabbit	UNIPROT ID: Q6GTS8	Recommended Dilutions: WB 1:5000-1:50000
Isotype: IgG	Full Name: peptidase M20 domain containing 1	
Immunogen Catalog Number: AG29154	Observed MW: 55-60 kDa	

Applications

Tested Applications: WB, ELISA	Positive Controls:
Species Specificity: human, mouse	WB : mouse kidney tissue, mouse pancreas tissue

Background Information

PM20D1 is a secreted enzyme that regulates the endogenous N-fatty acyl amino acid (NAAs) tissue and circulating levels by functioning as a bidirectional NAA synthase/hydrolase (PMID: 27374330).

Storage

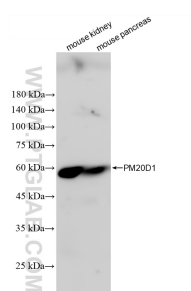
Storage:
Store at -20°C. Stable for one year after shipment.
Storage Buffer:
PBS with 0.02% sodium azide and 50% glycerol pH 7.3.
Aliquoting is unnecessary for -20°C storage

*** 20ul sizes contain 0.1% BSA

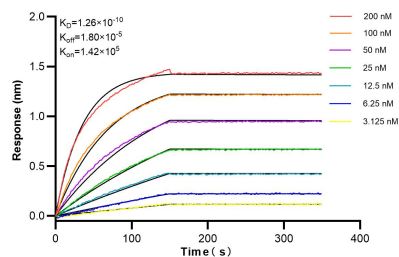
For technical support and original validation data for this product please contact:
T: 1 (888) 4PTGLAB (1-888-478-4522) (toll free in USA), or 1(312) 455-8498 (outside USA)
E: proteintech@ptglab.com
W: ptglab.com

This product is exclusively available under Proteintech Group brand and is not available to purchase from any other manufacturer.

Selected Validation Data



Various lysates were subjected to SDS PAGE followed by western blot with 84397-2-RR (PM20D1 antibody) at dilution of 1:10000 incubated at room temperature for 1.5 hours.



Biolayer interferometry (BLI) kinetic assays of 84397-2-RR against Human PM20D1 were performed. The affinity constant is 0.126 nM.