

For Research Use Only

MACROD1 Recombinant antibody, PBS Only

Catalog Number: 84398-3-PBS



Basic Information

Catalog Number: 84398-3-PBS	GenBank Accession Number: BC008316	Purification Method: Protein A purification
Size: 100ug , Concentration: 1 mg/ml by Nanodrop;	GeneID (NCBI): 28992	CloneNo.: 241506C1
Source: Rabbit	UNIPROT ID: Q9BQ69	
Isotype: IgG	Full Name: MACRO domain containing 1	
Immunogen Catalog Number: AG34080	Calculated MW: 325 aa, 36 kDa	
	Observed MW: 28 kDa	

Applications

Tested Applications:
WB, Indirect ELISA

Species Specificity:
human

Background Information

MACRO domain containing 1 (MacroD1) is also named as LRP16. MacroD1 is an ADP-ribosylhydrolase 1 that is highly enriched in mitochondria, participating in the pathogenesis of cardiovascular diseases (PMID: 38459256). MacroD1 was recruited to the sites of DNA damage via recognition of ADP-ribosylation at DNA lesions (PMID: 32683309). MacroD1 is highly expressed in human and mouse skeletal muscle (PMID: 29410655). MacroD1 may play an important role in carcinogenesis and/or progression of hormone-dependent cancers by feed-forward mechanism that activates ESR1 transactivation (PMID: 17893710, PMID: 17914104). MacroD1 could be involved in invasive growth by down-regulating CDH1 in endometrial cancer cells (PMID: 17893710).

Storage

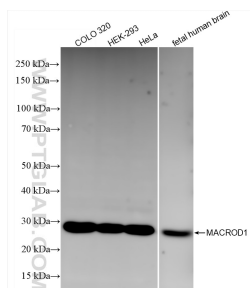
Storage:
Store at -80°C.

Storage Buffer:
PBS Only

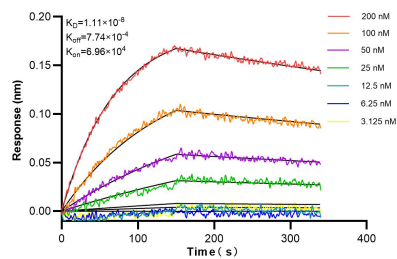
For technical support and original validation data for this product please contact:
T: 1 (888) 4PTGLAB (1-888-478-4522) (toll free in USA), or 1(312) 455-8498 (outside USA)
E: proteintech@ptglab.com
W: ptglab.com

This product is exclusively available under Proteintech Group brand and is not available to purchase from any other manufacturer.

Selected Validation Data



Various lysates were subjected to SDS PAGE followed by western blot with 84398-3-RR (MACROD1 antibody) at dilution of 1:5000 incubated at room temperature for 1.5 hours. This data was developed using the same antibody clone with 84398-3-PBS in a different storage buffer formulation.



Biolayer interferometry (BLI) kinetic assays of 84398-3-RR against Human MACROD1 were performed. The affinity constant is 11.1 nM.